



JDS Digital Security Systems
P.O. Box 374
New Baltimore, MI 48047
(586) 749-6342
(734) 629-1555
www.jdssecuritysoftware.com

Enterprise Table Manager

Reference and User Guide

04/25/2007

V1.1

The Table Manager is necessary to manage and create accounts for use by the Web Client and Softsite Enterprise Viewstation software

The Table Manager can also be used to manage logins for Softsite32 Enterprise. In this manner, Enterprise only implements the use of the login accounts tab.

The Table Manager software updates softsite.mdb, a simple access 97 database. It is the main database used by Softsite32 Enterprise and can be found at

C:\Program Files\Softsite32 Enterprise\Database.

This Manual has 2 main sections;

[Getting Started](#)

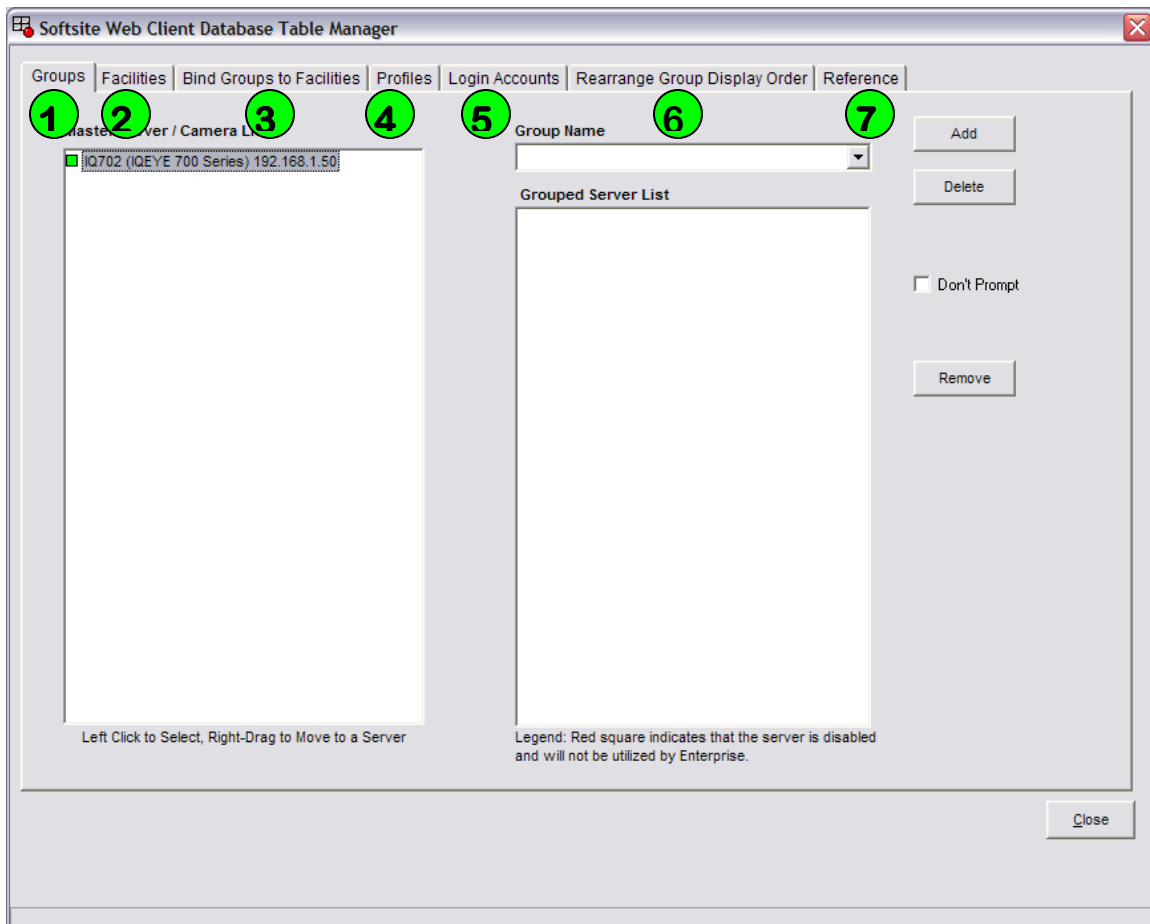
[Tab Descriptions and Explanation](#)

Getting Started

Launch the Application

Double click SS32_TBL_MGR.exe located in the Softsite32 Enterprise installation directory (C:\Program Files\softsite32 Enterprise\).

When the application is launched, you see the tables below.



1. Groups

- Allows moving of cameras into groups much like group editor.

2. Facilities

- Allows Facilities to be created. Facilities are locations with separate NVR's and groups. Facilities also allow for extra access security.



3. Bind Groups to Facilities

- Adds groups to created facilities for organization and access security.

4. Profiles

- Profiles allow certain login accounts to be able to access only their facility or groups of facilities.

5. Login Accounts

- Setup which login account uses which profiles.

6. Rearrange Group Display Order

- Implementation scheduled for March 2007.

7. Reference

- Quick reference of each tab.

The System Hierarchy is as follows

1. **Facilities** (*Groups of cameras are listed in a facility... Ex., Maint_Building*)
Also can be thought of as Groups of Groups.
2. **Groups** (*Cameras are logically listed into Groups... Softsite32 Enterprise uses groups to record and manage multiple cameras*)
3. **Cameras** (*the actual IP Cameras or Video Servers{encoders}*)
4. **User Profiles** (*Facilities are listed in a user profile... Ex. Commissioner can see all facilities, a janitor can only see one facility which may or may not contain 1 or more groups of cameras*)
5. **User Login Accounts** (*a user login is bound to a profile to inherit the characteristics of the profile*)

Create your configuration in this order

1. Make logical camera groups.
2. Make Facility names and assign groups to them.
3. Make User profiles and assign Facilities and user rights to them.
4. Make Login accounts and bind User Profiles to them.

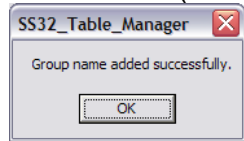


Step 1) Make Logical Camera Groups

In most cases the groups will already have been created in Softsite32 Enterprise (refer to softsite32 enterprise manual or group manager documentation). You can create them here as well

To make camera groups click on the *Group* tab after launching the application (SS32_TBL_MGR.exe).

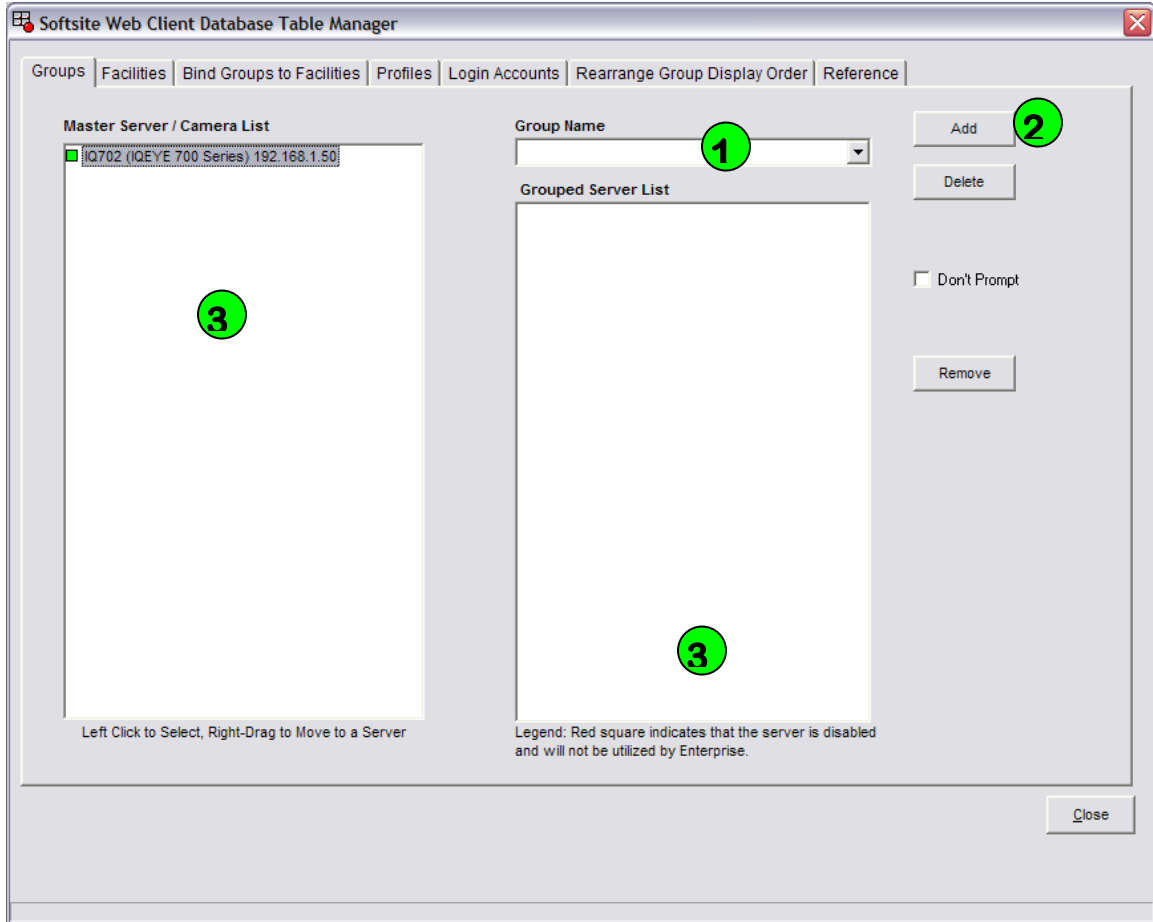
1. Add a new group name, Type the group name in the Group Name Box (see 1).
2. Click the Add button (see 2).



3. Click Ok
4. Select group from Group Name Box (see 1).
5. Select Camera from Master Server/Camera List (see 3).
6. Right Click and drag camera from Master Server/Camera to Grouped server list and release (see 4).
7. Repeat steps 6-7 till all of the cameras are in the group.
8. To create another group and add cameras repeat steps 1-6 and then repeat 6-7.



JDS Digital Security Systems
P.O. Box 374
New Baltimore, MI 48047
(586) 749-6342
(734) 629-1555
www.jdssecuritysoftware.com



Step 2) Make Facilities and assign groups to them

You must create facilities to use the Web Client.

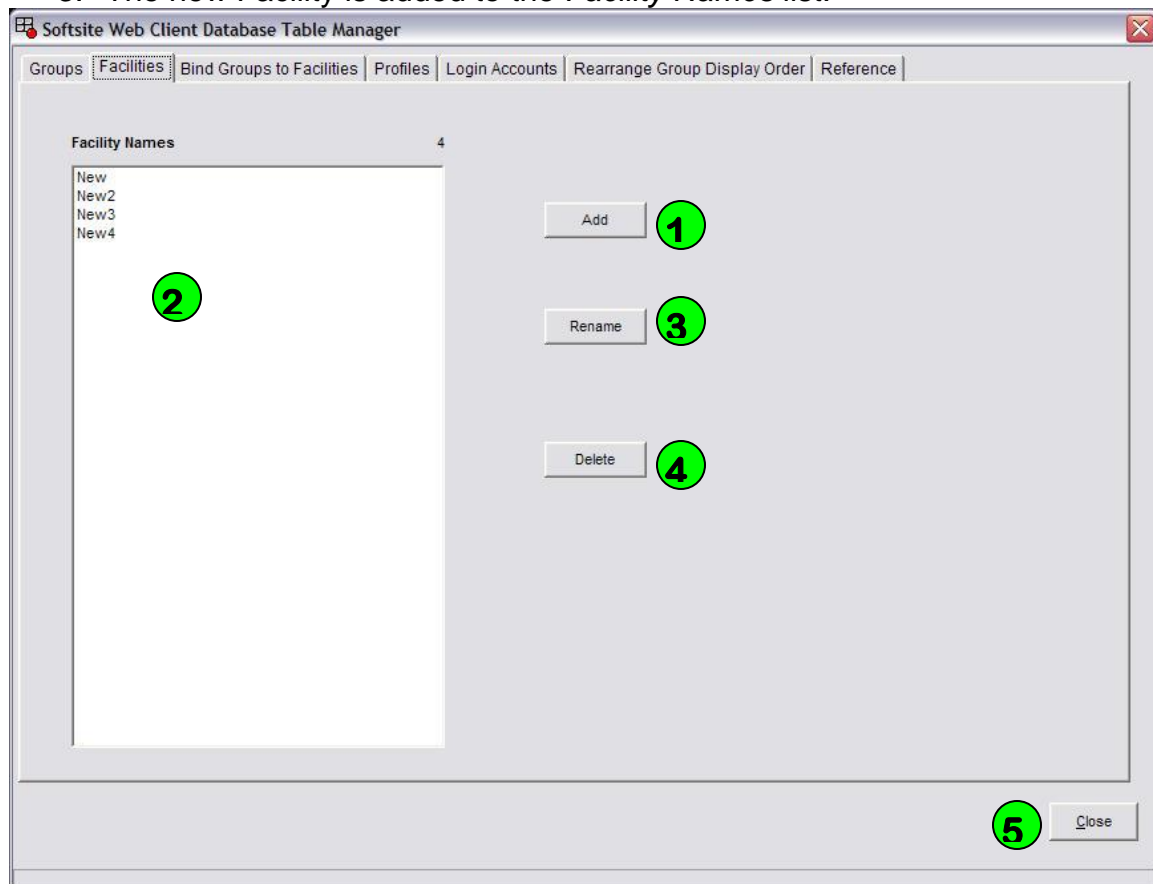
Create Facilities

Select the *Facilities* tab

1. Click the *add* button to add a new facility (see 1).
2. Enter the name of the new facility then click *ok*.



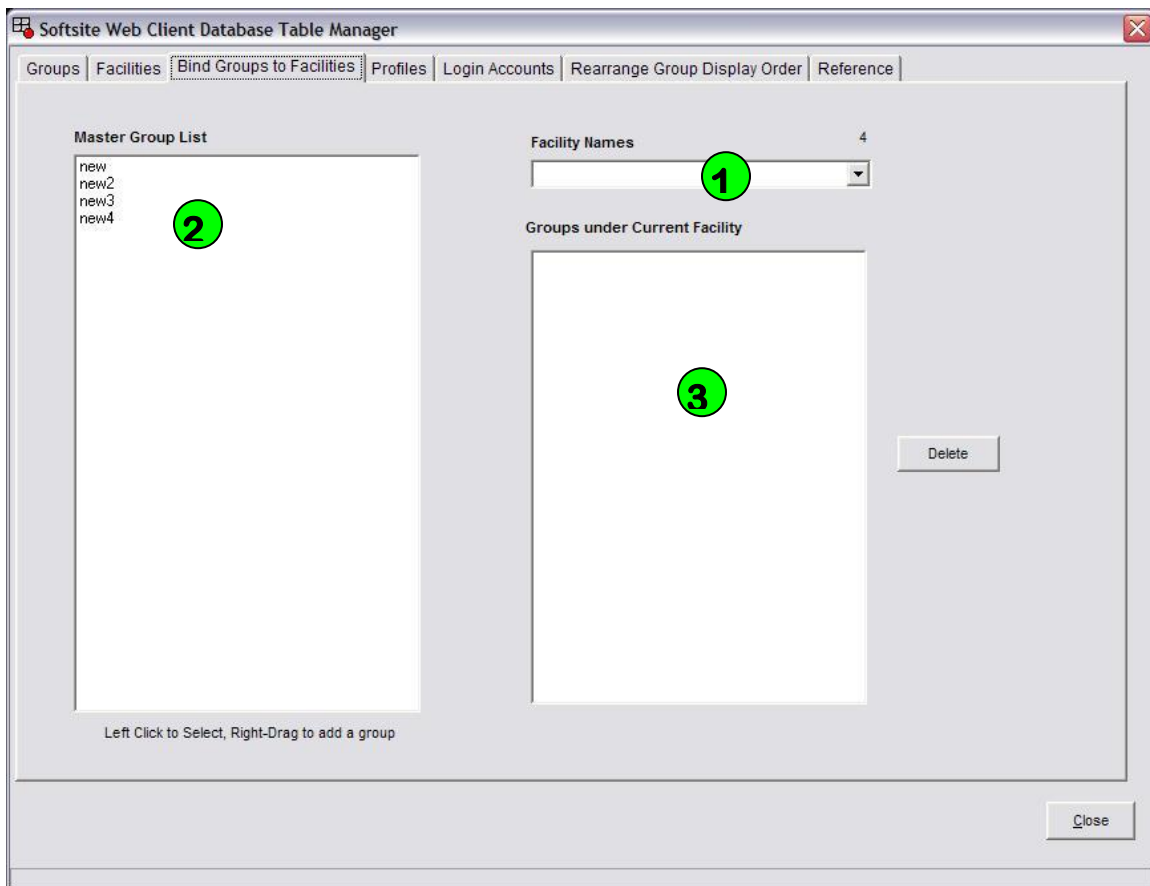
3. The new Facility is added to the *Facility Names* list.



Add Groups to Facilities

Select the *Bind Groups to Facilities* Tab

1. Select the Facility name that you wish to add camera groups to (see 1).
2. Click on the Group you wish to place in the Facility (see 2).
3. Left click and drag the group to the *groups under current facility* list (see 3).
4. Release and click *ok*.
5. Repeat steps 2-4 until all groups are added for the selected facility.





Step 3) Make User profiles, assign Facilities and User Rights to them

Create user profiles

Select the *Profiles* tab

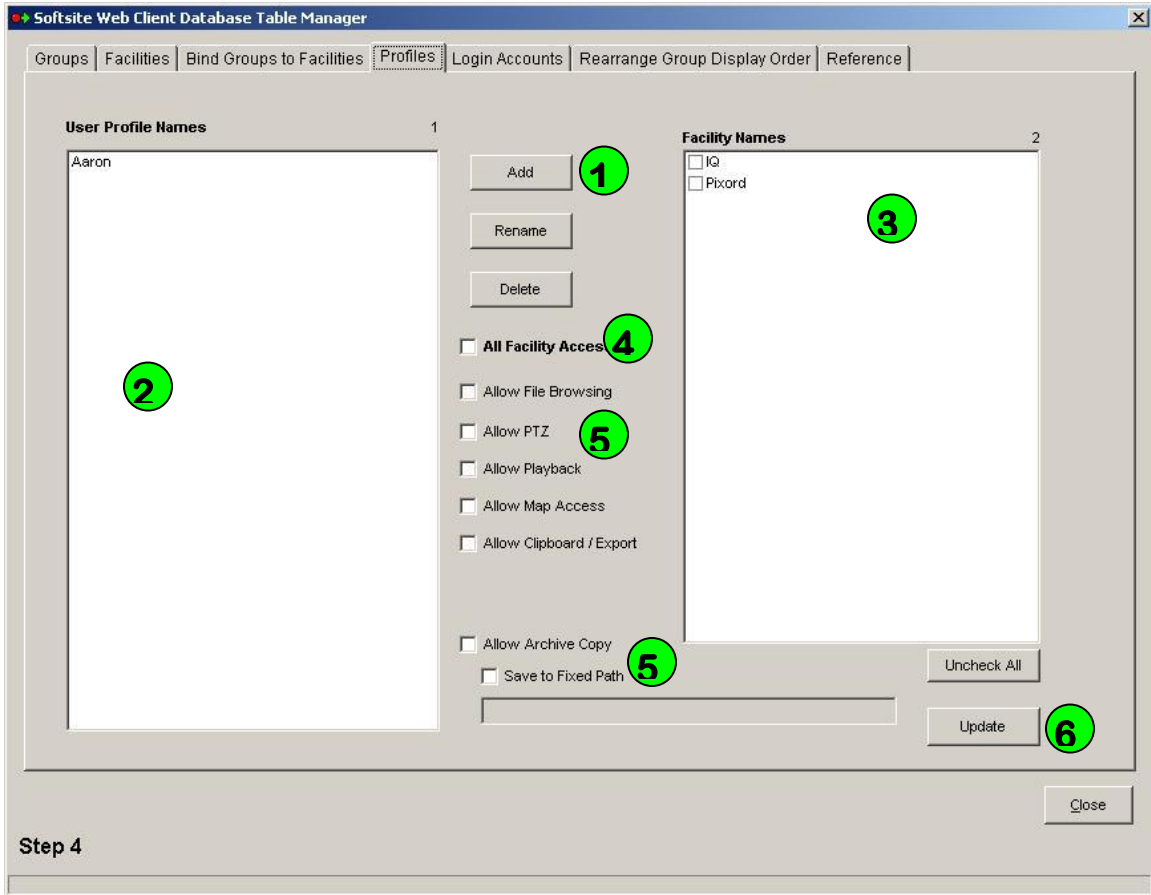
1. Click add to create the name of the new profile (see 1).
2. Type the name of the new profile and click *ok*.
3. The New profile is displayed in the *User Profile Names* list (see 2).

Assign facilities and user rights to profiles

1. Select the user profile from the *user profile names* list (see 2).
2. Select the facilities the user profile will have access to from the *Facility Names* list (see 3).
3. If the profiles is to have access to all the facilities check the All Access checkbox (see 4).
4. Select which options the User profile will have beyond viewing the cameras live (see 5).
5. Click Update to save the updated profile (see 6).



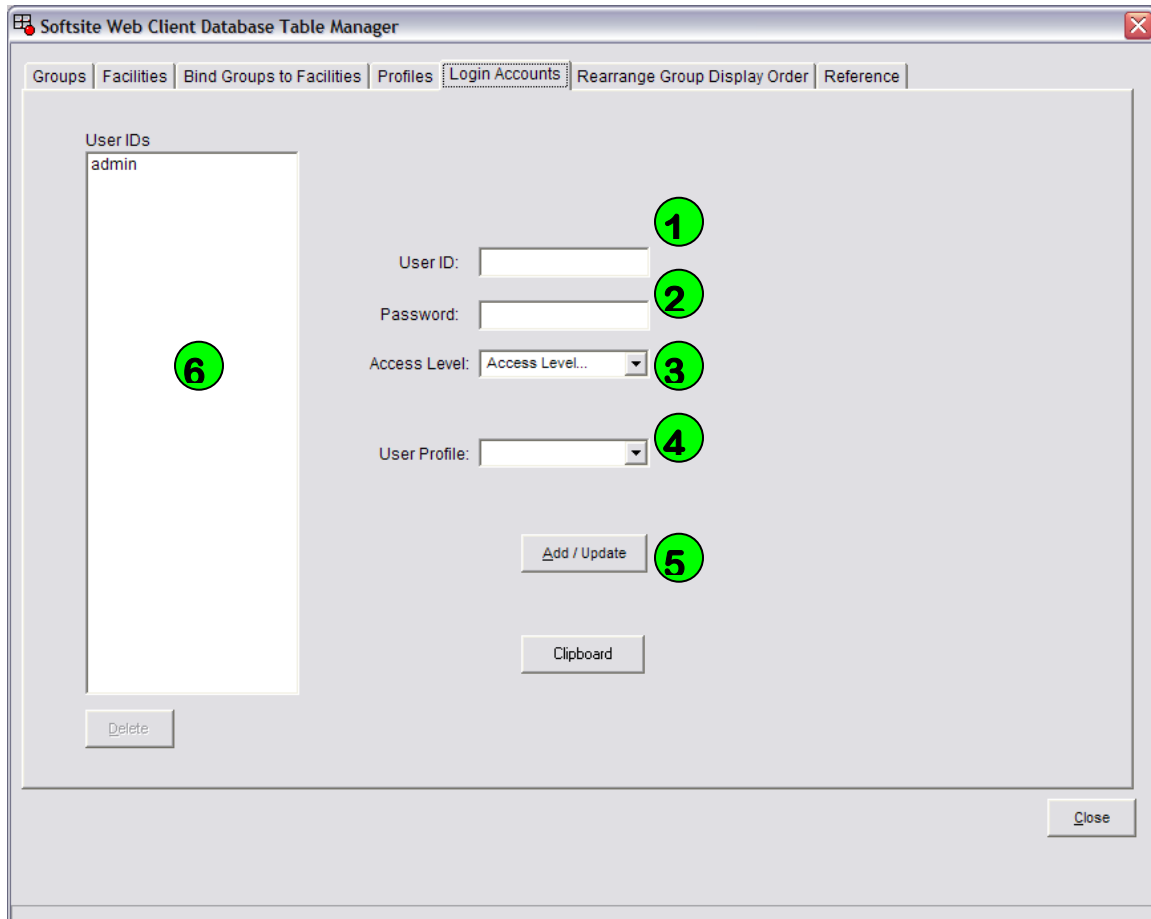
JDS Digital Security Systems
P.O. Box 374
New Baltimore, MI 48047
(586) 749-6342
(734) 629-1555
www.jdssecuritysoftware.com



Make Login accounts and bind User Profiles to them

Select the *Login Accounts* tab

1. Type a user name into the *User ID* field (see 1).
2. Type a password into the *Password* field (see 2).
3. Select the *Access Level* for Softsite: This does not apply to the Web Client (see 3).
4. Select the Profile you wish to use with this Login (see 4).
5. Click *add/update* to save the login account.
NOTE: Any users added through the softsite32 enterprise interface must have the user profile assigned through here.
6. The new User ID is displayed in the *User ID* list.



Softsite Web Client Database Table Manager

Groups | Facilities | Bind Groups to Facilities | Profiles | **Login Accounts** | Rearrange Group Display Order | Reference

User IDs
admin

User ID: 1

Password: 2

Access Level: Access Level... 3

User Profile: 4

Add / Update 5

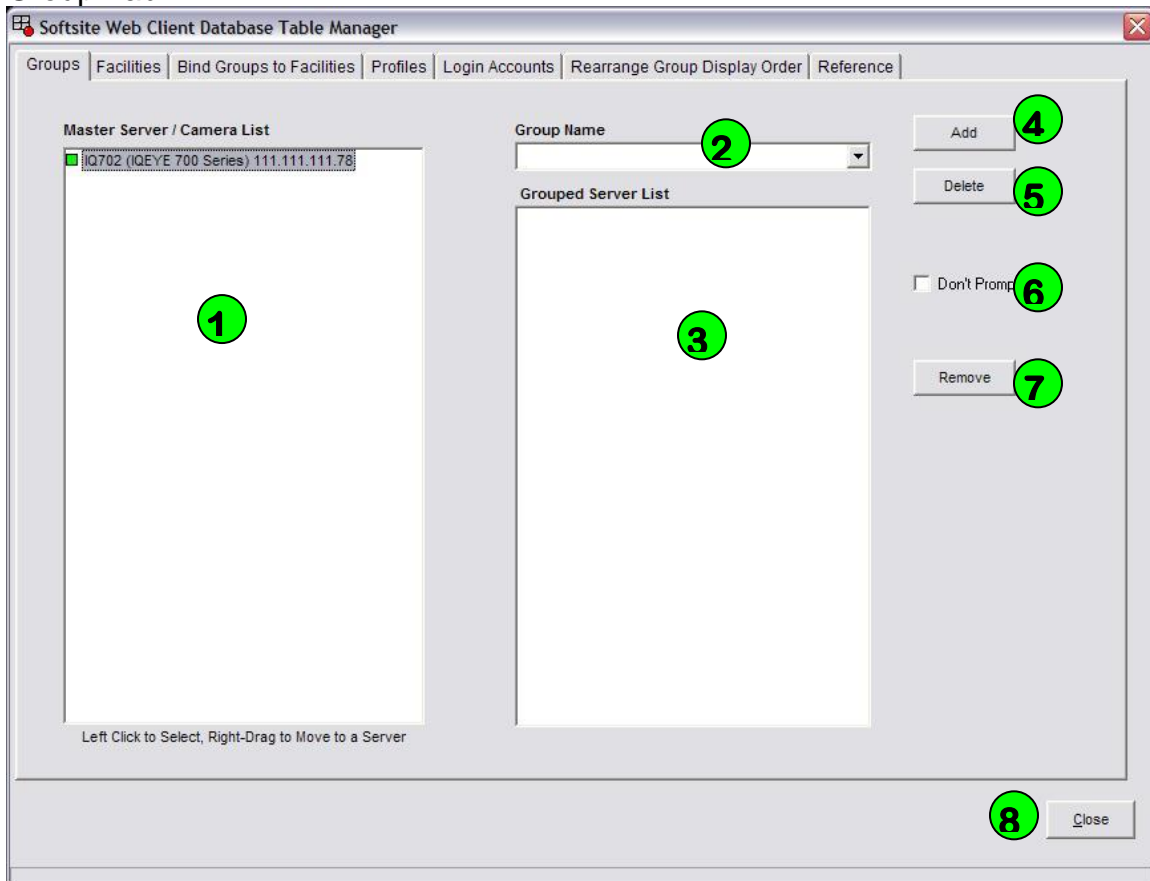
Clipboard

Delete

Close

TABS

Group Tab



1. Server/Camera List

- All cameras in the database are listed here. Left Click to select a camera and then right-drag camera to the grouped server list after selecting a group.

2. Group List

- Drop down menu to select group to add cameras to. Must be selected prior to dragging cameras over.

3. Grouped Server List

- List of all server in the current group selected.

4. Add Button

- Add a group to the group list.

5. Delete Button



JDS Digital Security Systems

P.O. Box 374

New Baltimore, MI 48047

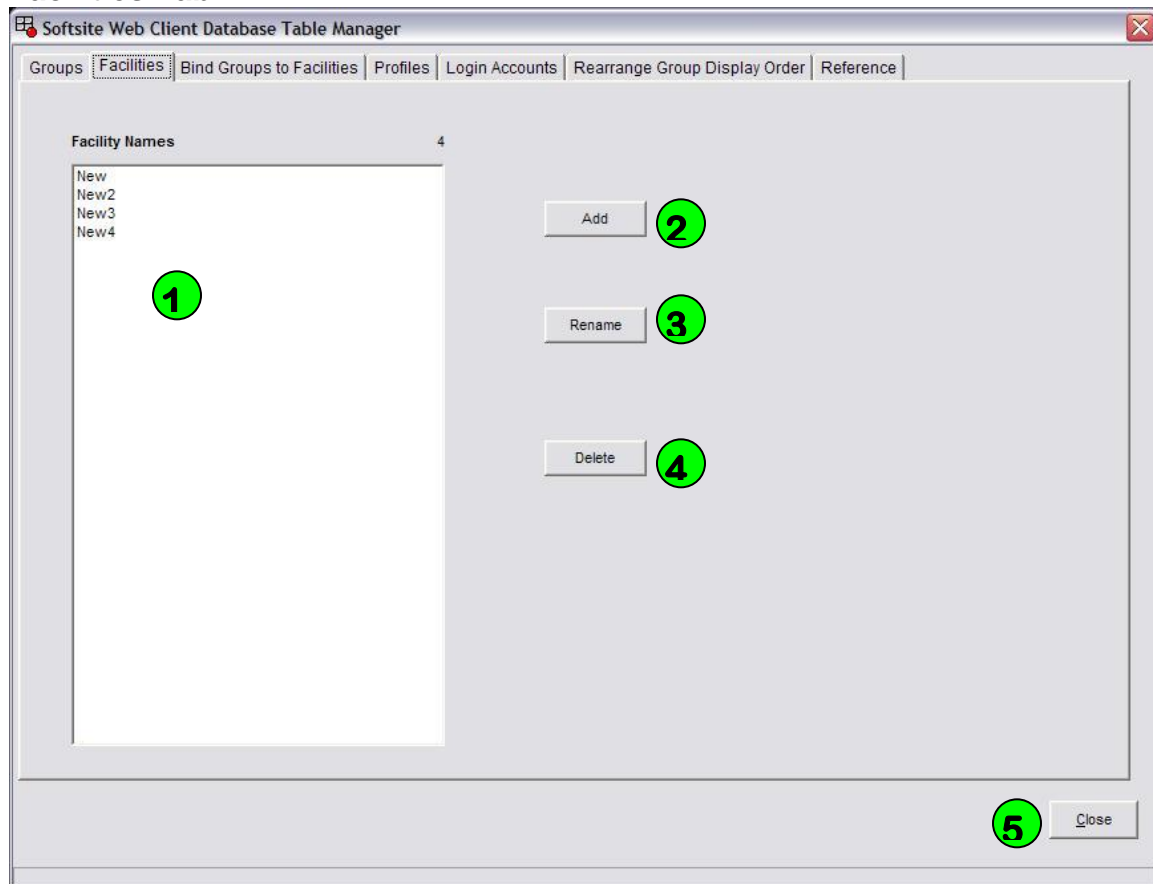
(586) 749-6342

(734) 629-1555

www.jdssecuritysoftware.com

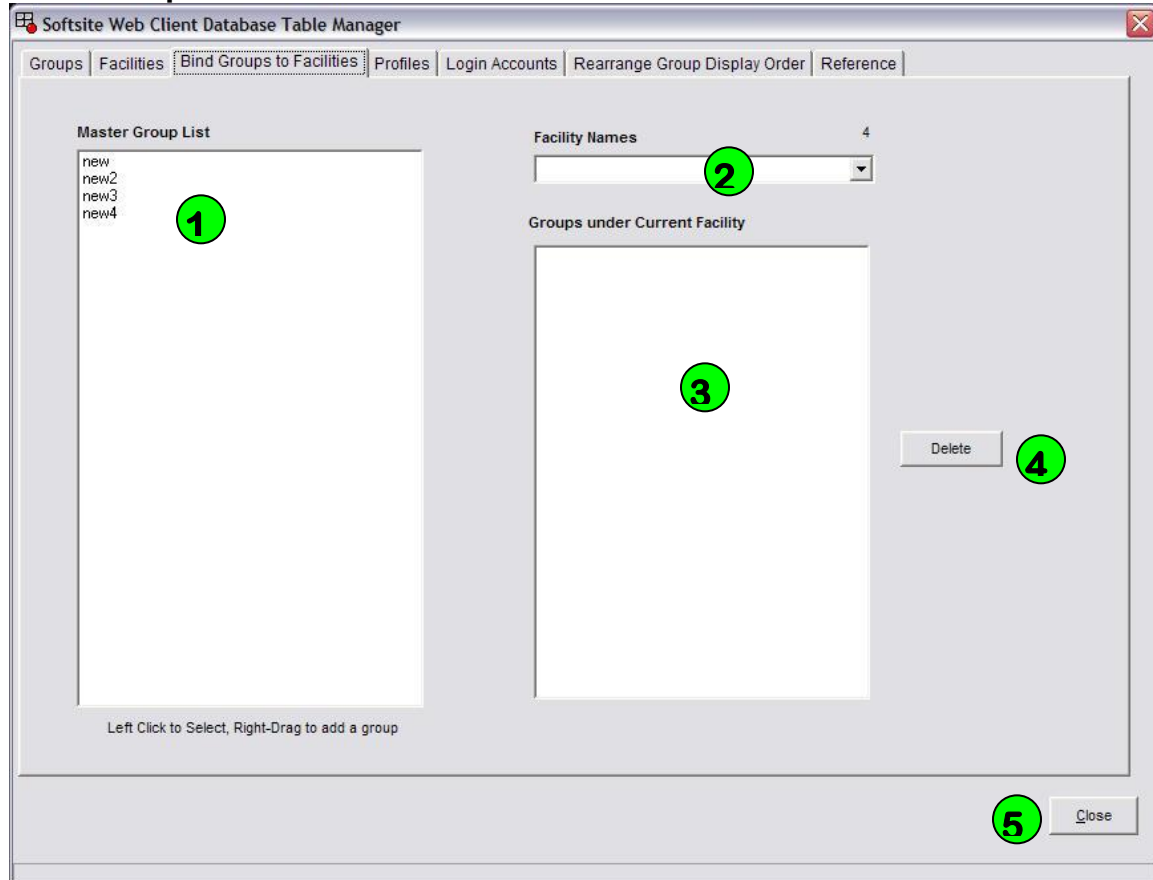
-
- Delete a group from the group list.
 - 6. Don't Prompt Button**
 - Don't prompt before changes made.
 - 7. Remove Button**
 - Remove a camera from the current group selected.
 - 8. Close Button**
 - Close the Table Manager.

Facilities Tab



- 1. Facility List**
 - List of all Facilities added to the table.
- 2. Add Button**
 - Add a Facility.
- 3. Rename Button**
 - Rename a selected Facility.
- 4. Delete Button**
 - Delete a selected Facility.
- 5. Close Button**
 - Close the Table Manager.

Bind Groups to Facilities



1. Master Group List

- List of all groups in the database. Left click to select group and right drag to groups under facility list after facility has been selected.

2. Facility List

- Select facility you would like to add groups to. Must select before dragging a group over.

3. Groups Under Current Facility

- Displays all groups under the selected facility. Also drag point to add new groups.

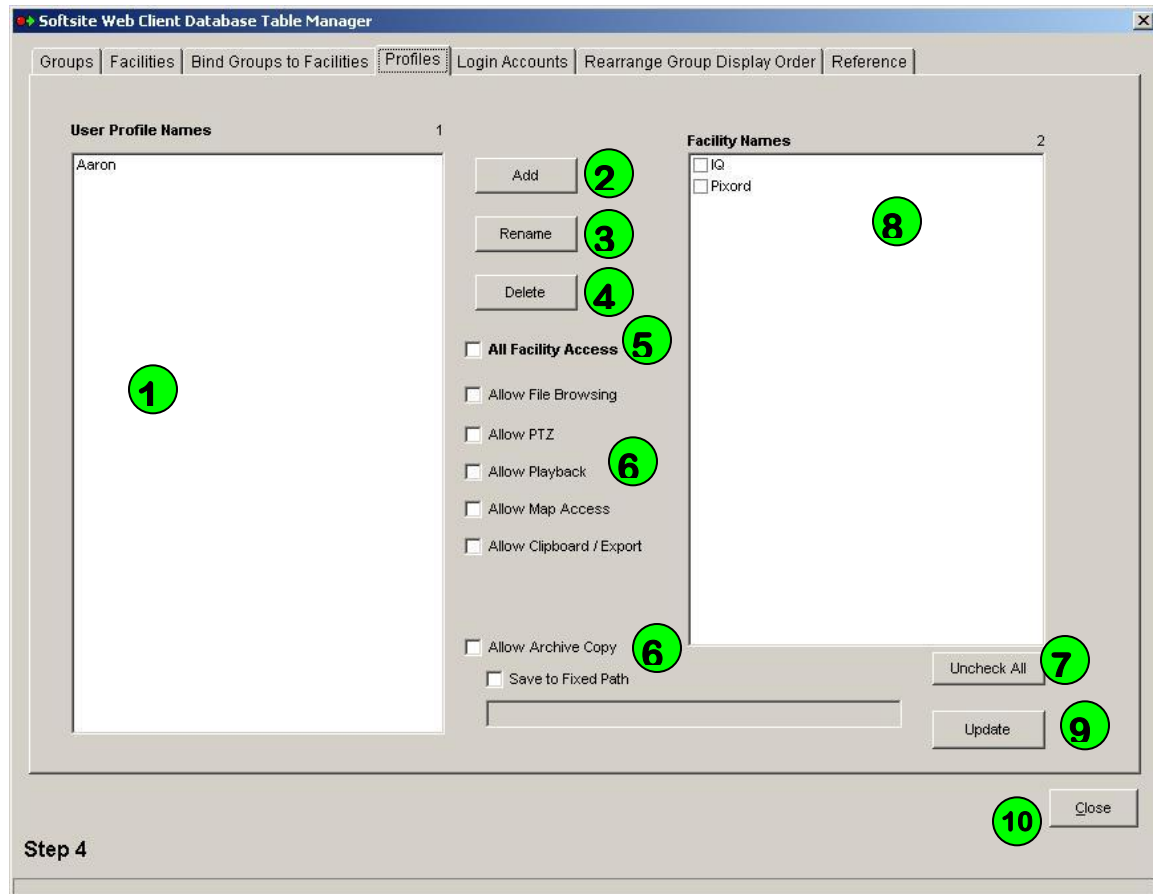
4. Delete

- Remove selected group from the Groups under current facility list.

5. Close

- Close the Table Manager.

Profiles Tab



1. User Profile Names

- List of all profiles created.

2. Add Button

- Add a Profile to the list.

3. Rename Button

- Rename the selected profile.

4. Delete Button

- Delete the selected profile.

5. All Access Check

- Select to allow selected profile to access all functions.

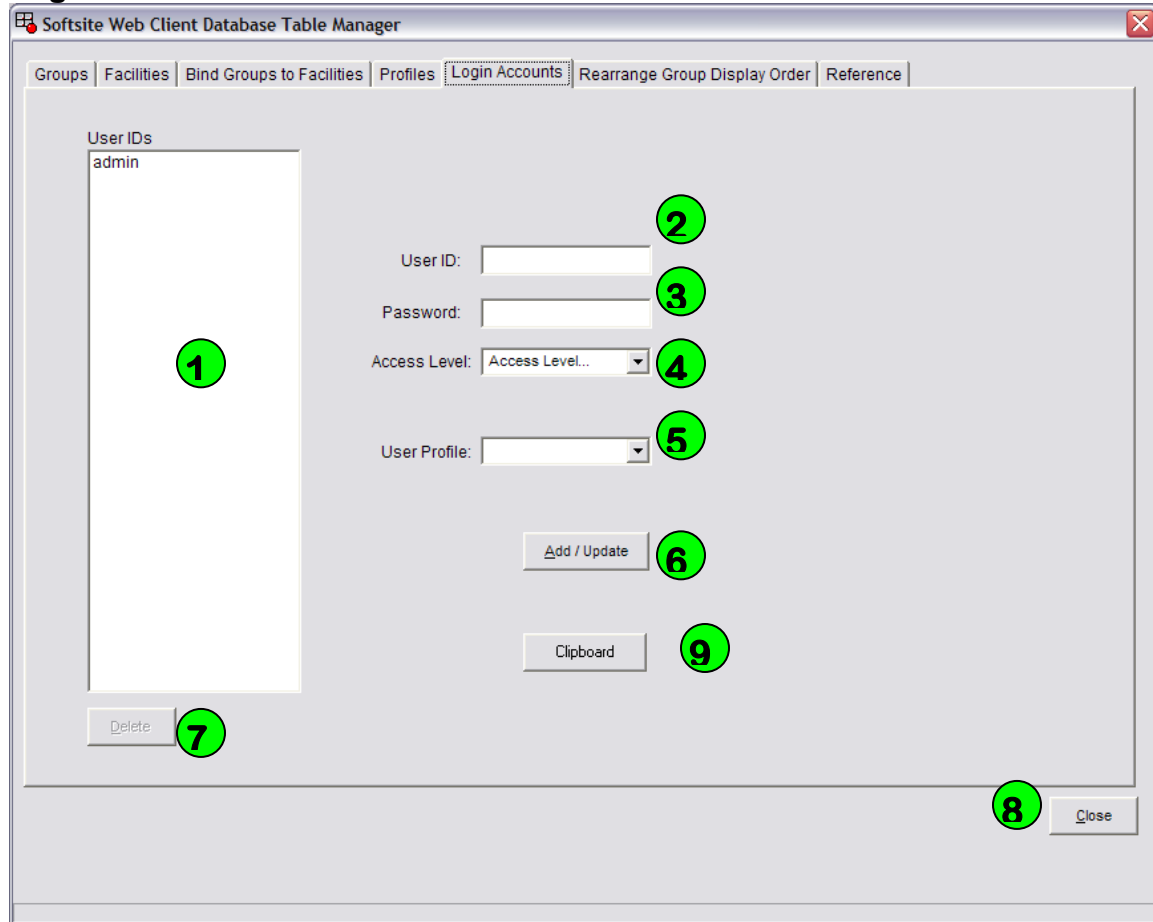
6. Access Level Checks

- Select to allow selected profile access to particular functions.
 - Allow File Browsing:** Access to the browse the directory structure for the camera being reviewed



-
- b. **Allow PTZ:** Allows PTZ movement
 - c. **Allow Playback:** Allows access to archives
 - d. **Allow Map Access:** Allows map access when a map is configured
 - e. **Allows Clipboard/Export:** Allows clipboard and export use when reviewing archives. **Note:** Setting is ignored when playback is disabled
 - f. **Allow Archive Copy:** Allows archive to be saved to local machine or to fixed path
 - g. **Save to Fixed Path:** Only allows save to a specific path, can be a UNC path
- 7. Uncheck All Button**
- Unchecks all facilities checked.
- 8. Facility Names**
- All facilities created on earlier tab. Checking allows selected profile access to the facility.
- 9. Update Button**
- Updates info for each profile. Must be clicked, before moving on to another tab or closing, to save settings.
- 10. Close**
- Close the Table Manager.

Login Accounts Tab



1. User ID List

- User ID's listed in the database and any added here, are displayed here.

2. User ID

- User ID is entered here.

3. Password

- Password is entered here.

4. Access Level

- Access Level is selected here (Softsite32 functionality).

5. User Profile

- User Profile attached to User ID is selected here (Web Client functionality).

6. Add/Update Button



JDS Digital Security Systems

P.O. Box 374

New Baltimore, MI 48047

(586) 749-6342

(734) 629-1555

www.jdssecuritysoftware.com

-
- Adds New or updates current User ID.
 - 7. Delete Button**
 - Deletes the selected User ID.
 - 8. Close Button**
 - Close the Table Manager.
 - 9. Clipboard**
 - Places login information on the clipboard for pasting into another application.

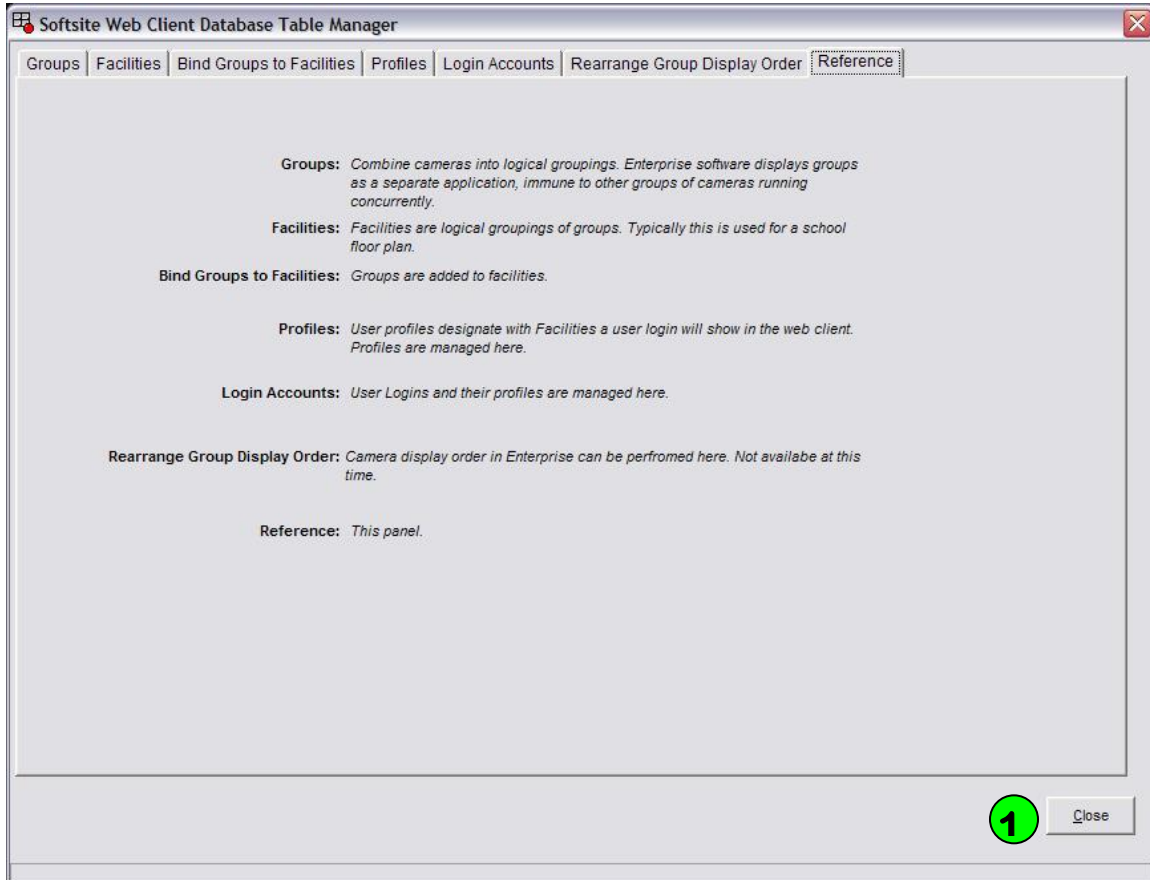
Rearrange Group Display Order

This Tab is not implemented currently.



JDS Digital Security Systems
P.O. Box 374
New Baltimore, MI 48047
(586) 749-6342
(734) 629-1555
www.jdssecuritysoftware.com

Reference Tab



1. Close

- Close the Table Manager.