



**JDS Digital Security Systems**  
P.O. Box 374  
New Baltimore, MI 48047  
(586) 749-6342  
(734) 629-1555  
www.jdssecuritysoftware.com

## Softsite32 Archive Manager

ssArchmaint.exe

4/16/2007

SSarchmaint.exe is used to monitor disk size and delete archives when necessary, either by date or by percentage. This ensures that storage media does not fill and causes Enterprise to halt recording.

SSarchmaint.exe is installed by Softsite32 Surveillance products automatically. The installed files related to this application are;

ssArchmaint.exe	The Application
ssArchmain.ini	The Settings for the Application
ssArchmaint.txt	The Start/stop log of actions taken by users on the application.
TestFiles.mdb	The temporary database used to sort archives for deletion.
DeletionLog.txt	The text file that writes the actions taken for each deletion cycle.

By default Archive Manager launches at the start of Enterprise. This can be disabled by editing the softsite.ini here  
[Archive Manager]

**LaunchWithSS32 = FALSE**

This is installed TRUE

You can launch from a shortcut if you do not wish have it launched by the software. This is also is used when dealing with multiple paths.

You can edit the ssArchmain.ini to autostart the application here as well as using the auto command, or enterprise launching it.

AutoStart = TRUE

There are two basic ways to use this application;

1. Monitor a root path (in the ssArchmaint.ini file as RecordImagesBasePath = C:\Archives)
2. Monitor multiple root paths on multiple drives or single drives.

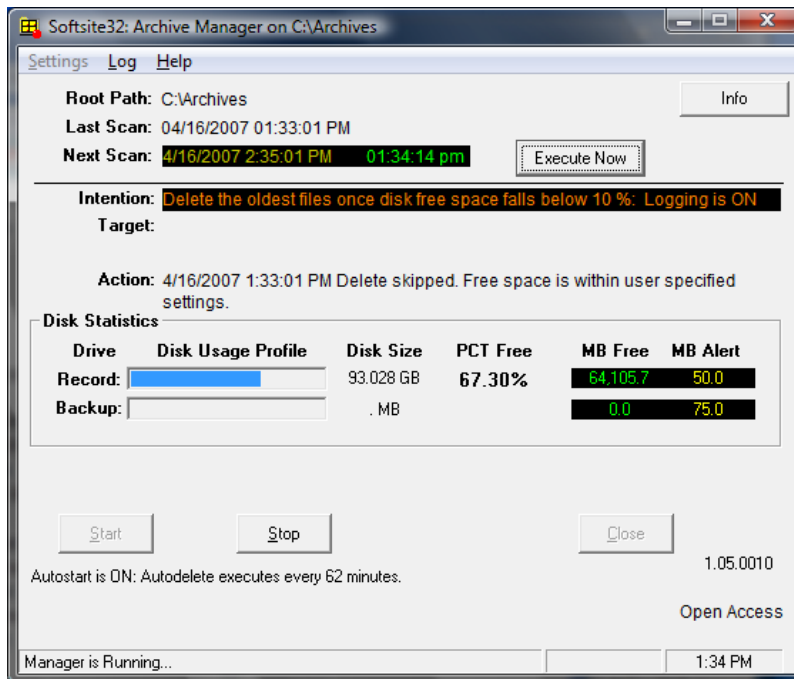
Item #1 is the standard way to use the app for a stand alone machine

Item #2 is designed for use when Recording is performed on multiple physical or networked paths. If multiple Root paths or Drives are desired, then the user must create a shortcut for each root path/drive and edit its TARGET line to include /PATH=xxxx where xxx is the desired root path. It will override the RecordImagesBase Path in the ini file.

One Shortcut is required for each unique drive requiring monitoring. The application can also be run standalone from the NAS or storage device.

You can also use the ArchmaintBatch to launch multiple instances of the application when many paths are used for recording. See Explanation at the end of the document.

## Monitoring Panel



**Root Path:** Path where application is monitoring(path set in INI file)

**Last Scan:** Time last scan took place

**Next Scan:** Application will scan and delete if disk space is below set amount or date and time requirements have been met

**Execute Now:** Forces scan to run immediately NOTE: will not delete if size/date is within parameters set

**Drive Statistics:** Lists the statistics for the drive being monitored

**PCT Free:** Lists the percent left of free disk space

**Start:** Starts the application monitoring, if grayed out application is already running.

**Stop:** Stops the application from scanning, if grayed out application is stopped

**Close:** Closes application but it must not be running.



**Digital Security Systems**

**JDS Digital Security Systems**

P.O. Box 374

New Baltimore, MI 48047

(586) 749-6342

(734) 629-1555

[www.jdssecuritysoftware.com](http://www.jdssecuritysoftware.com)

### ssArchMaint.ini

<b>RecordImagesBasePath</b>	Path being monitored by archive manager
<b>BackUpBeforeDeletion</b>	Set to true moves archives to backup drive before deleting
<b>BackupDrive</b>	Drive archives are backed up to
<b>LogDeletions</b>	Logs files and folders deleted by the applications
<b>MaxLogSizeBytes</b>	Maximum file size the log can be before it roll over into a new file
<b>DebugLevel</b>	Set only under supervision of JDS Technical Support
<b>DeletionInterval</b>	Number of hours, or days, or months to delete past
<b>DeletionIntervalStyle</b>	Hour, day or month to delete
<b>EmailUserID</b>	Email user id for email alerts
<b>EmailUserPW</b>	Email user password for email alerts
<b>EmailReceipient</b>	Email recipient
<b>SendEmailAlerts</b>	Enable email alerts
<b>DisplayDiskUsage</b>	Display statistics of disk usage
<b>DisplayRecordDisk</b>	Display statistics of recording disk
<b>DisplayBackupDisk</b>	Display statistics of backup disk
<b>RecordAlertLimit</b>	Alerts when recording disk is below this many megabytes
<b>BackupAlertLimit</b>	Alerts when backup disk is below this many megabytes
<b>AutoStart</b>	Starts monitoring upon launch of application
<b>MinimizeOnStartup</b>	Launches application minimized
<b>QueryUserForDeletion</b>	Application must receive user intervention before deletion can occur
<b>DeletionType</b>	Delete by date/time or percentage
<b>FreeDiskLimitPercent</b>	When Drive reaches this percent archives are deleted when scan time occurs
<b>FreeDiskCeilingPercent</b>	Archives are deleted until drive reaches this percent
<b>QuantityToDelete</b>	Maximum archives, archive manager will delete during a scan
<b>DisableDelete</b>	Testing only
<b>DeleteArchiveIntervalMins</b>	Scan time interval
<b>ThDelay</b>	Can lower CPU when computer is being overworked and cpu is too high
<b>DeletionBurstCount</b>	Change only under supervision of JDS Technical Support
<b>DeletionDelayMS</b>	Change only under supervision of JDS Technical Support
<b>UseAPIDelete</b>	Change only under supervision of JDS Technical Support
<b>UseSecureLogin</b>	Enable Password protection



**Digital Security Systems**

**JDS Digital Security Systems**

P.O. Box 374

New Baltimore, MI 48047

(586) 749-6342

(734) 629-1555

[www.jdssecuritysoftware.com](http://www.jdssecuritysoftware.com)

---

ArchMaintBatch.exe

Used for launching archive manager for multiple paths without Shortcuts for each

To configure, place all paths being monitored in *root paths.txt*. save the file and launch ArchMaintBatch.exe.

You can create a shortcut and use /auto in the target to automatically launch all of the instances in the txt file