



Softsite32 Softview Digital Video Editor SoftViewDVE.exe

04/24/2006

SoftviewDVE is a utility used to create one video stream from multiple sources and allows for synchronized playback up to 9 cameras. It may be used to splice specific time periods from multiple cameras and multiple NVR systems. SoftviewDVE is located under the Tools Menu in Softview.

SoftviewDVE.exe is installed by Softsite32 Surveillance products automatically. The installed files related to this application are;

SoftviewDVE.exe	The Application
SoftviewDVE.ini	The Settings for the Application

Initial Setup

1. Locate the softviewdve.ini. . If it was installed with Softsite32 Enterprise, it is in the root installation folder (c:\program files\softsite32 enterprise). If SoftViewDVE was installed as a stand alone application, by default it is located here: C:\Program Files\SoftSite Digital Video Editor.
2. Open the INI for editing
3. Edit the *DefaultArchivePath = C:\Archives* line if you are not recording to the C drive. Leave the path blank and DVE will read from the database
4. Edit the *DefaultDatabasePath = C:\Program Files\SoftSite32 Enterprise\Database\softsite.mdb* line if this database is not local or not installed in the default directory.

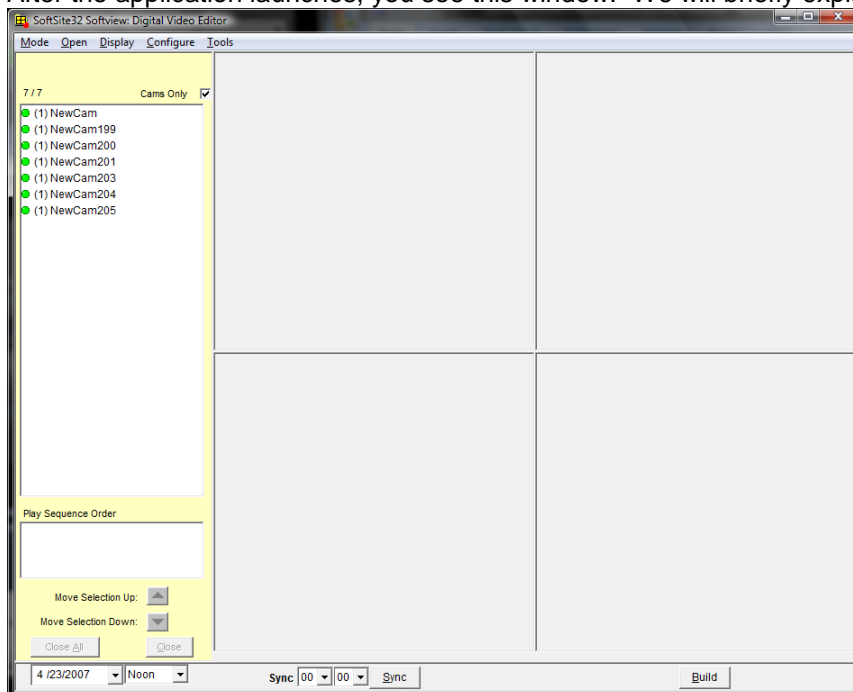
NOTE: Both of these lines can use UNC paths to read over the network.

Review Archives:

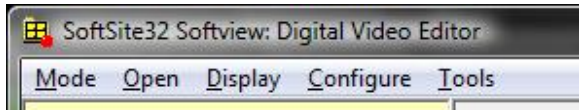
To access *SoftviewDVE* you can either

- Launch the application from the shortcut on the desktop
- Launch the application from *Enterprise* by selecting the archives button at the top of the window on the left

After the application launches, you see this window. We will briefly explain the menu structure now

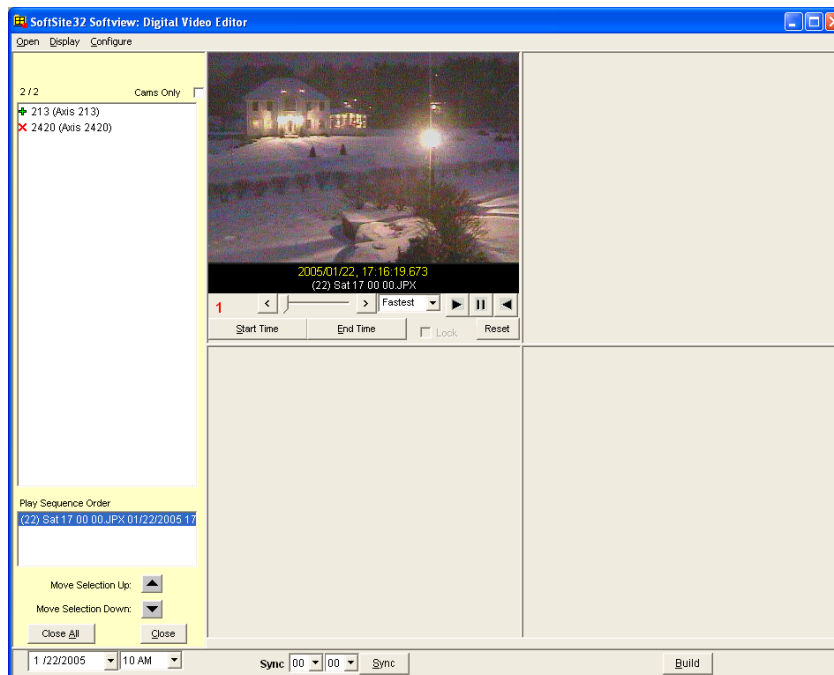


Menu Structure



1. Mode
 - Simple Playback
2. Open
 - For Editing
 - For Playback
3. Display
 - Show Sync Playback Controls
4. Configure
 - NVR Sources
5. Tools
 - Convert to JPG/AVI

Step 4- Double click a server from the tree. Click on newcam and drag video into available window. **The Softview Icon will be highlighted as you drag video into the window. Repeat to fill up the four available windows.



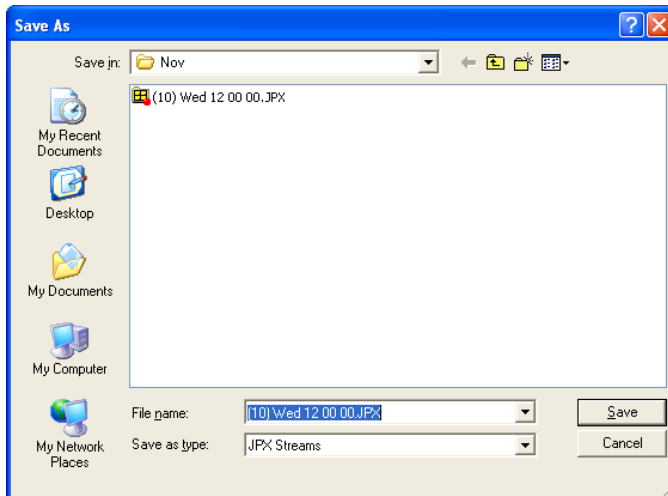
Step 5- Use search tools in each window to identify the specific video segment that is to be included in the Build. Once the 1st frame of video is located hit Start Time. Click End Time when the last frame is located, and then click off the LOCK button (a start and end time must be identified to lock the stream). Repeat on all windows.



JDS Digital Security Systems
P.O. Box 374
New Baltimore, MI 48047
(586) 749-6342
(734) 629-1555
www.jdssecuritysoftware.com

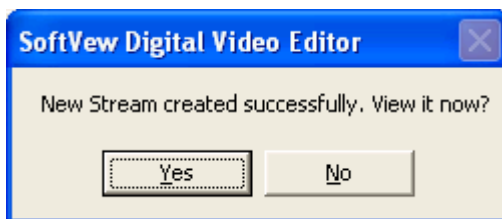
Step 5b- To synch all video feeds on a specific time within the hour click the minute and second drop boxes located next to the Sync button. Once the time is defined click SYNC. All streams will be launched to that defined time.

Step 6- To create the new video stream click the Build button



Determine save location and name the JPX file

Step 7 - Once Stream is created click YES to view



Step 8 - Utilize viewing buttons to play back new stream



Digital Security Systems

JDS Digital Security Systems

P.O. Box 374

New Baltimore, MI 48047

(586) 749-6342

(734) 629-1555

www.jdssecuritysoftware.com



Synchronized Playback- allows user to view multiple streams from the same time period

Step 1 - After defining video segments, click on the Display and select SHOW PLAYBACK CONTROLS

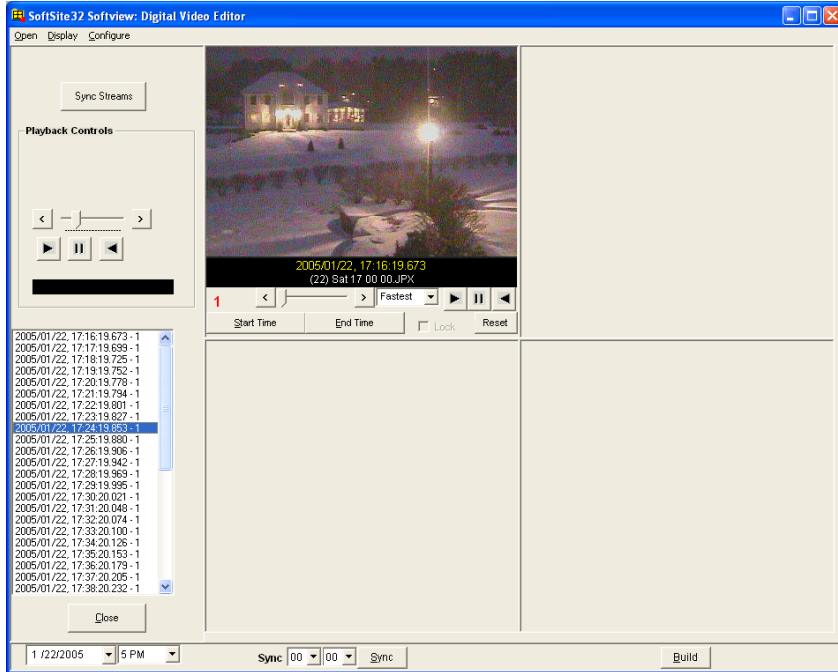
Step 2 - Click Sync Streams

Step 3 – Hit the Play button to start synch playback at beginning of segment

Step 3b – Click on any time segment to determine launch time of playback (the slider will move to indicate a specific time has been selected)



JDS Digital Security Systems
P.O. Box 374
New Baltimore, MI 48047
(586) 749-6342
(734) 629-1555
www.jdssecuritysoftware.com



Configure Multiple NVR sources

- Launch SoftviewDVE and click Configure on the tool bar



JDS Digital Security Systems
P.O. Box 374
New Baltimore, MI 48047
(586) 749-6342
(734) 629-1555
www.jdssecuritysoftware.com

A screenshot of a software window titled 'Softview NVE: Configure NVR Camera Database Sources'. The window has a blue title bar and a light beige background. It contains several input fields: 'NVR Name' with the text 'STEVE', 'NVR IP Address' with '192.168.1.105', 'NVR Database Path' with 'C:\Program Files\Softsite32 Enterprise\Database', and 'NVR Archive Path' with 'C:\Archives'. There are two 'Test' buttons to the right of the path fields. Below these is a larger 'NVR Notes' text area. At the bottom, there are 'Add', 'Update', 'Delete', and 'Close' buttons. A status bar at the very bottom shows 'Record: 1'.

- Step 1** – Click Add
- Step 2** - Complete all fields and use the Test buttons to confirm all paths.
- Step 3** – Click Update

- ** Use Scroll bar to select and update configured NVRs
- ** Use Delete button only to Delete NVR record

Play Sequence Mode- Allows the user to arrange the build sequence.

- Step 1** - Highlight the appropriate camera
- Step 2** - Use the Move Selection Up/Down buttons to change the sequence

** The RED number in the bottom left hand corner of the window will tell you the current sequence number of that video stream

Open Feature- Allows for a directory search for any stream of video that can be loaded for playback or editing

- Step 1** - Edit- loads Start/Stop and Lock features
- Step 2** - Playback- simply loads the video segment for viewing

Quick Video Search- this feature will launch the previous or next segment of video for any selected video

- Step 1** - Right click on selected video stream will give the following options
 - Previous hour (back)
 - Next hour (forward)



Digital Security Systems

JDS Digital Security Systems

P.O. Box 374

New Baltimore, MI 48047

(586) 749-6342

(734) 629-1555

www.jdssecuritysoftware.com

Remove Selected video stream- allows you to remove all or one selected video streams

Step 1 - Click on video to be removed

Step 2 - Click the CLOSE button located on the bottom left of your screen

Step 3 - To remove all video chose the CLOSE ALL button

SoftviewDVE.ini settings

SimplePlaybackMode	Defaults DVE to Simple mode
UseDefaultsPathsOnly	Uses default local database or NVR database
DefaultDatabasePath	Path where the local database is located
DefaultArchivePath	The default path of archives for the local database
Use24HourMode	Displays military time
Database_Name	Path of the NVR database
CacheDBLocally	Brings the network stored database to the local machine
CacheLocalPath	Path where database is stored after caching
CacheFilesLocally	Downloads archives locally before playing
UseSecureLogin	Uses Softsite32 passwords
UserMinAccessLevel	Access level needed to use dve
DisableCopyFunctions	Disables any copy functions
UseLiteralRecPath	Bypasses groups for review or archives