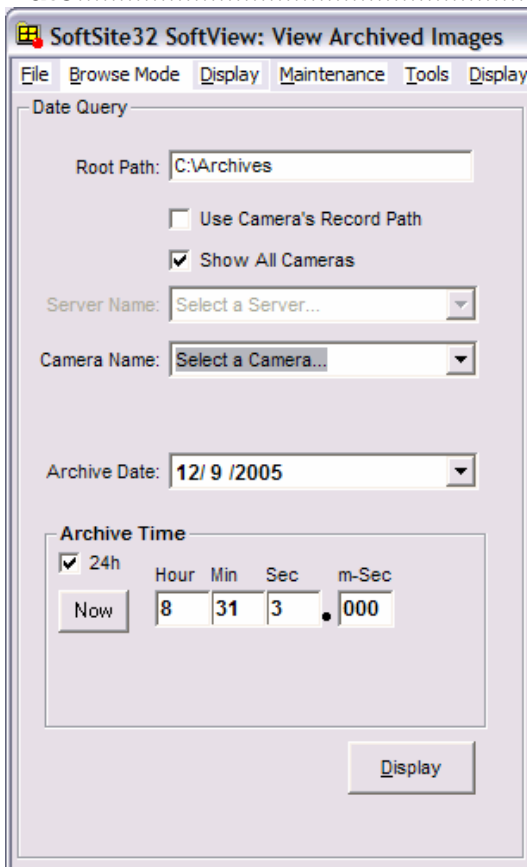


**Menu Structure**.....2

**Main Window** .....3

**Browse Mode**.....5

**Date**.....5



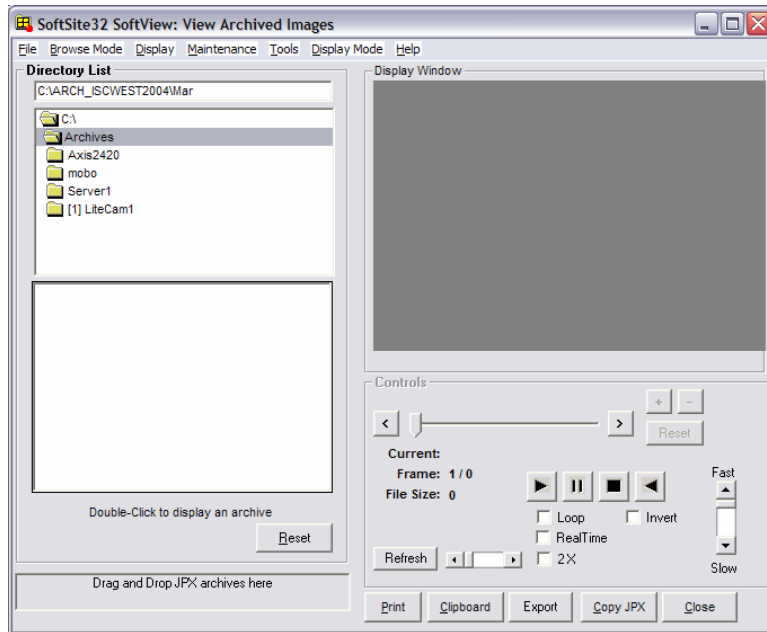
.....5

**Directory List**.....5

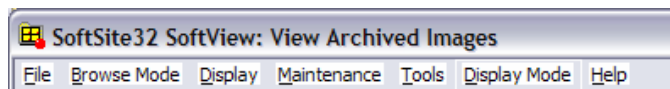
**Ftp Server**.....5

## Softview

To access *Softview* click the archives button at the top of the window



## Menu Structure



1. **File**
  - a. **Open**
    - Open a jpx stream ie (02) Wed 19 00 00.JPX
  - b. **Option**
    - Click to adjust options
  - c. **Exit**
    - Click to exit the program
2. **Browse Mode**
  - a. **Date**
    - Browse archives via a date search by camera
  - b. **Directory List**
    - Browse archives via file structure(directory)
  - c. **Ftp Server**
    - Browse archives on an ftp server
3. **Display**
  - a. **Allow Image Stretch**
    - Allows playback image to be stretched
  - b. **Lock Aspect Ratio**
    - Keeps the aspect of the picture to remain the same

#### 4. Maintenance

##### a. Indexing

- Sets application up for indexing of files either manually or automatically

##### b. Backup/Deletion

- Brings up Archive Manager or starts it

#### 5. Tools

##### a. Launch Softview DVE Stream Editor

- Launches the application(application allows editing of multiple streams for evidence purposes)

##### b. Format Conversion

- Allows streams to be converted to avi for evidences

#### 6. Display Mode

##### a. Thumbnails

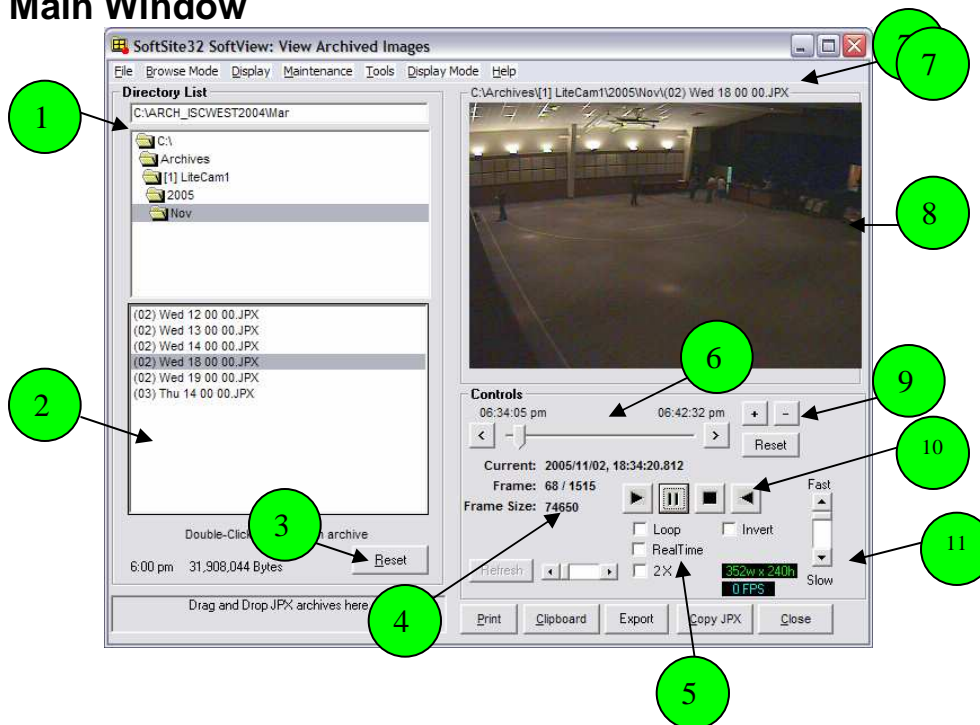
- Allows you to view the thumbnails in arrangements of your choice

#### 7. Help

##### a. About

- Displays information about application like revision

### Main Window



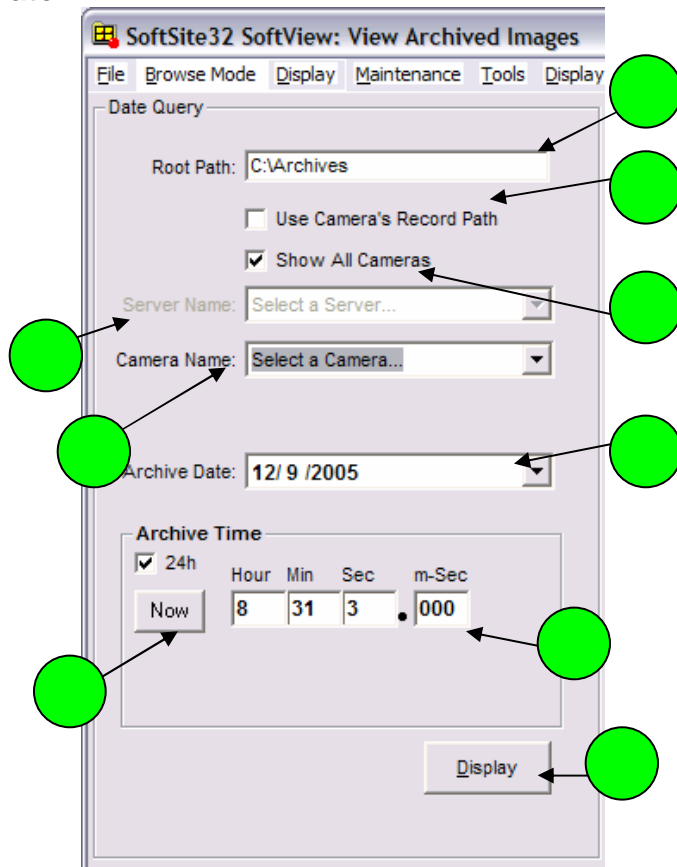
- 1. Directory List/ Calender List**
  - Displays either directory list or calendar(determined by browse mode).
- 2. Hourly Archive list**
  - Displays archives in current folder by date ie  
(03) Thu 14 00 00.JPX  
Date Day Hour
- 3. Reset Button**
  - Resets the directory list to the default directory located in softview.ini
- 4. Archive Information**
  - Displays current information about the archive including time, frame number, frame size
- 5. Loop, Realtime, 2x, buttons**
  - Selects type of playback corresponding to vcr buttons(see 10). Always Pause before changing playback options
    - a. Loop**
      - Plays file in a loop
    - b. Realtime**
      - Plays file as close to recorded time as possible ie if file was recorded at 5fps the playback would be at 5fps
    - c. 2X**
      - Plays file at 2 times the speed of normal speed, can be adjusted using the slider to the left
- 6. Scroll Bar**
  - Informs you of starting and ending frame, allows you to scroll thru video, also when selected allows wheel mouse to scroll. Side buttons advance frame by frame
- 7. Stream Location**
  - Displays the current location of the selected stream
- 8. Jpx Window**
  - Displays the selected video file when the file is double clicked
- 9. Brightness adjustment**
  - Adjusts the brightness of the current image in the jpx window
- 10.VCR Buttons**
  - Play, Pause, Stop, and Play in reverse buttons. Always pause the stream before changing speeds or playback options(see 5)

## 11. Normal Playback Speed

- Playback speed when nothing is selected underneath the play buttons. Can be slowed using the vertical slider.

## Browse Mode

### Date



Directory List  
Ftp Server