

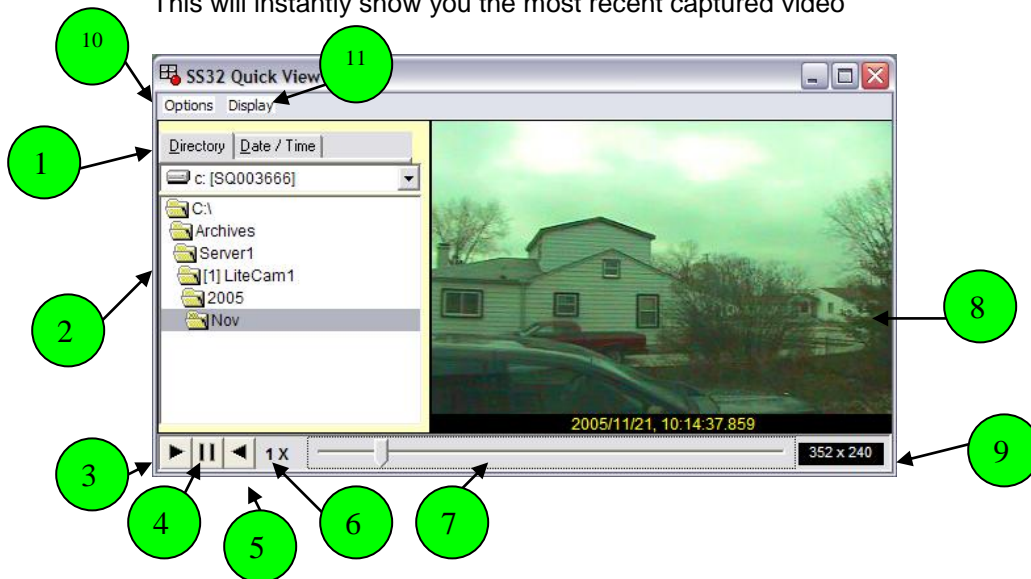


Digital Security Systems

JDS Digital Security Systems
P.O. Box 374
New Baltimore, MI 48047
(586) 749-6342
(734) 629-1555
www.jdssecuritysoftware.com

Quickview

To Bring up quick view press the recording button
This will instantly show you the most recent captured video



1. Video Search Options

- You can use a directory tree or a date/time to search through archives (you may need to resize the window to show the bottom and the individual archives)

2. Directory Tree / Date and Time

- Depending on which tab you have chosen you will see either a directory tree or a calendar

3. Play

4. Pause

5. Play in Reverse

6. Play Speed

- Displays the current speed playback is occurring in

7. Slider Bar

- Allows quick movement through archive and also movement using the scroll wheel of the mouse

8. Video Window

- Where the images are displayed

9. Recorded Image size

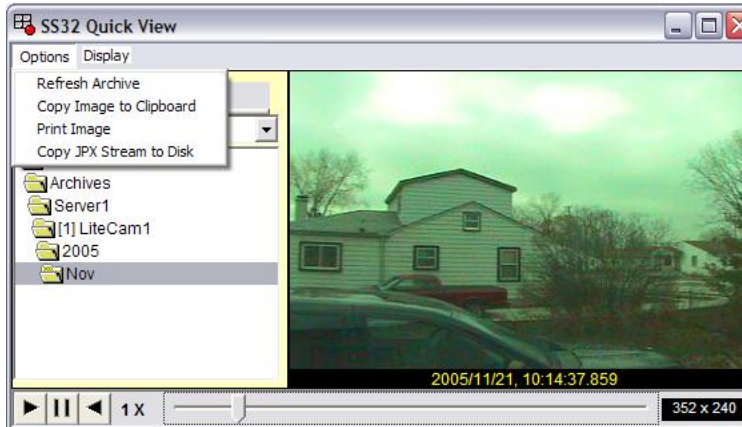
- The size the image was recorded in

10. Options – Different options can be selected here



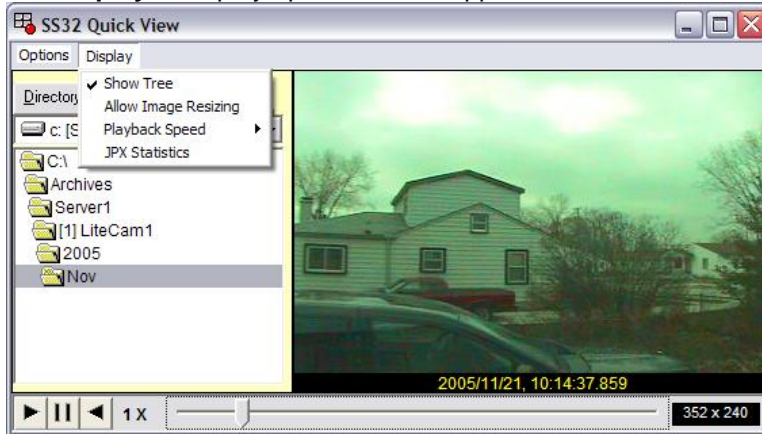
Digital Security Systems

JDS Digital Security Systems
P.O. Box 374
New Baltimore, MI 48047
(586) 749-6342
(734) 629-1555
www.jdssecuritysoftware.com



- *Refresh Archive* – adds video that has been recorded since the record button has been pushed
- *Copy Image to Clipboard* – Takes image from the video window and allows it to be pasted into other applications
- *Print Image* – Prints image to default printer
- *Copy Jpx Stream to Disk* - Copies the current file to another location on the hard drive

11. Display – Display options for the application can be selected here



- *Show Tree* – Displays the tree or the date and time depending on the method of retrieval selected
- *Allow Image Resizing* – Allows image to be stretched to a larger size for playback
- *Playback Speed* – Allows playback speed to be changed
- *JPX Statistics* – Displays frame count and size of current archive