

Digital Security Systems

Softsite32 Lite Manual

Content :

- Installation
- Setup
- General Use

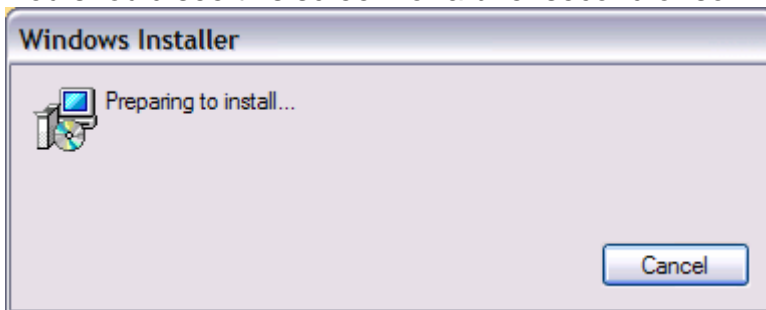
Content :	- 1 -
Installation	- 3 -
Setup	- 4 -
Main Window Layout	- 5 -
Setup Window Layout	- 7 -
Simple	- 8 -
Camera Info	- 8 -
Network Info	- 9 -
Recording	- 10 -
Advanced	- 11 -
Network Scan	- 12 -
General Use	- 14 -
Main Window	- 14 -
Archive Viewing	- 15 -

Installation

Double click *Softsite Lite.msi* to begin installation



You should see this screen for a brief second or so

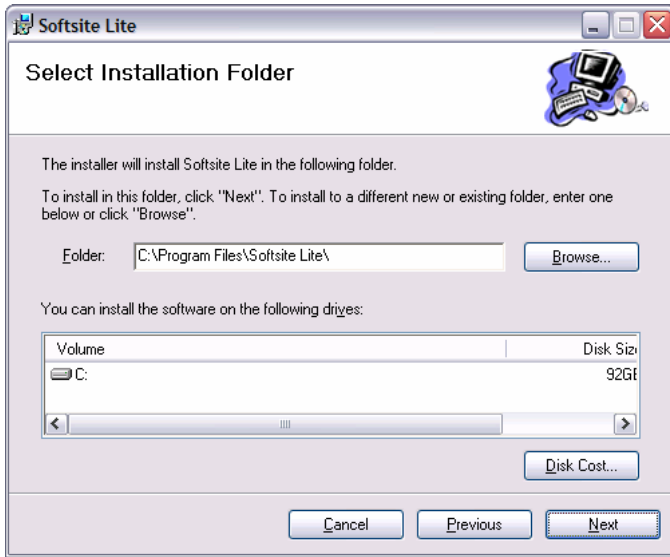


The installer window is displayed . Select *Next* to advance the installation

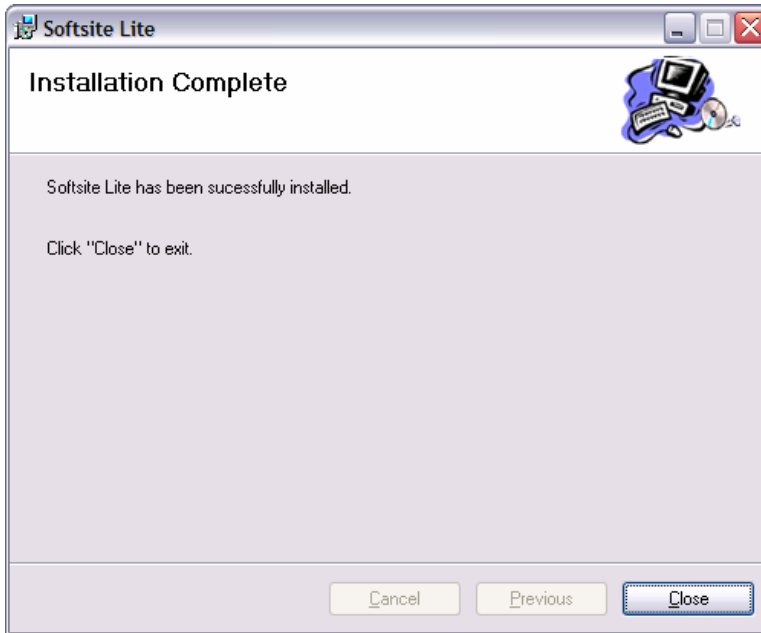


Select the default destination and click *Next* to continue (Using default destination is advised and will be used in the rest of this manual)

Select *Next* again to start installation.



Select *Close* to exit and finalize the installation

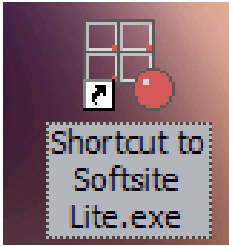


Setup

Double Click the Icon *Shortcut to Softsite Lite.exe*

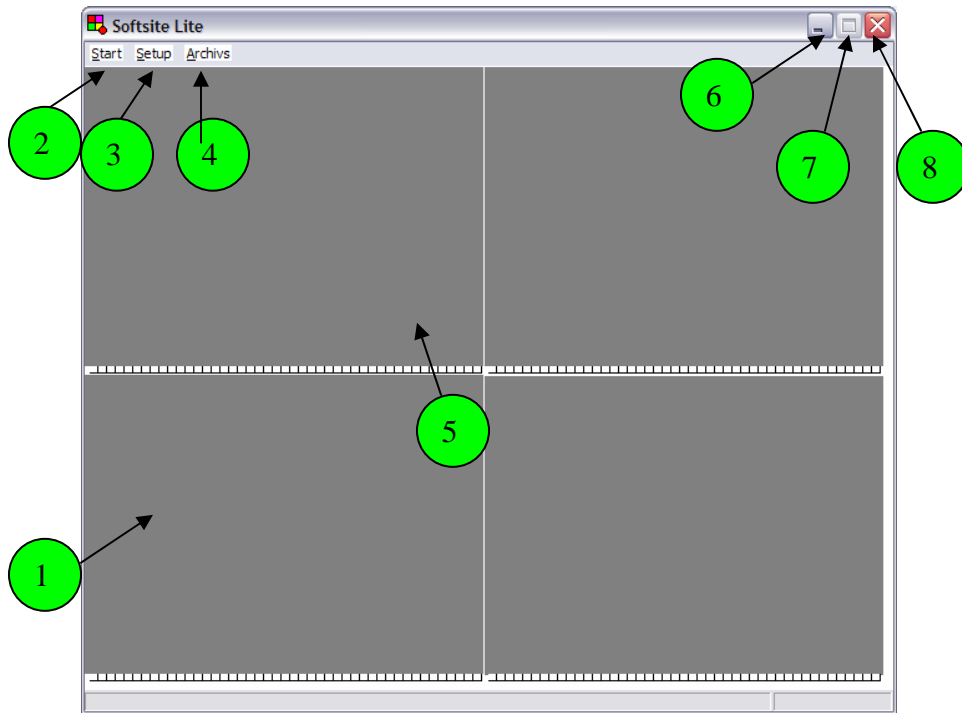
JDS Digital Security Systems

<http://Softsite32.com>



The Main Window Launches

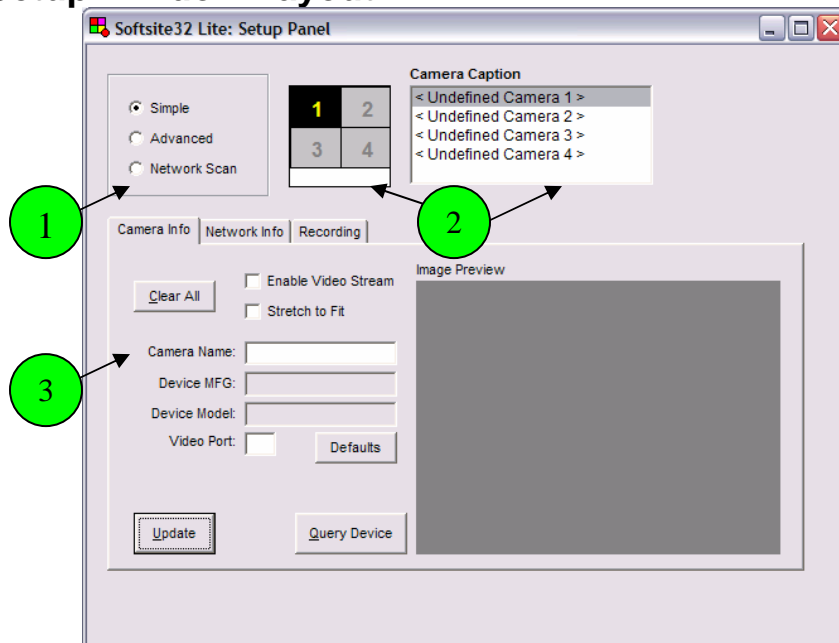
Main Window Layout



1. **Main Window**
 - This window is seen upon launching Softsite Lite application
2. **Start Button**
 - This button when pressed starts cameras streaming and/or recording
3. **Setup Button**
 - This button when pressed will open up setup window Note: only works when application is not streaming video
4. **Archive Button**
 - Launches softview when pressed
5. **Video Window**
 - Window where video is seen
6. **Minimize Button**
 - When pushed minimizes window
7. **Maximize Button**
 - When pushed maximizes window
8. **Close Button**
 - When pushed closes application Note: only works when application is not streaming video

Click Setup

Setup Window Layout



1. Setup Selection

- Allows selection of 3 methods of Setup
 - Simple
 - Advanced
 - Network Scan

2. Camera Caption

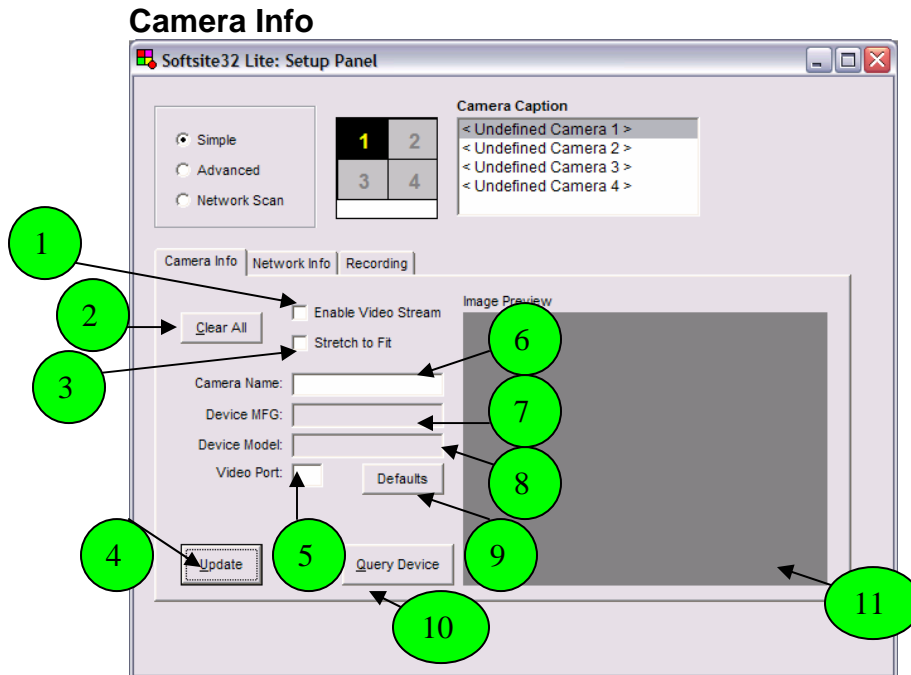
- Displays cameras title and which camera is selected and for which window

3. Stream Setup

- Where camera setting are inputted for streaming

Simple

Allows addition of one camera at a time, while adding only pertinent information, than allowing software to query camera for other information



1. **Enable Video Stream**
 - When checked enables cameras for streaming
2. **Clear All**
 - Clears all information for selected camera(camera caption)
3. **Stretch to Fit**
 - When checked takes streams larger than 320x240 and stretches them down to fit 320x240
4. **Update**
 - Saves current information Note: must be clicked on each separate tab
5. **Video Port**
 - Number of video port when using a video server
6. **Camera Name**
 - Name desired for the camera selected
7. **Device MFG**
 - Field populates with the manufacturer after the device is queried Note: See 10
8. **Device Model**
 - Field populates with the model after the device is queried Note: See 10
9. **Defaults**
 - Resets default settings

JDS Digital Security Systems

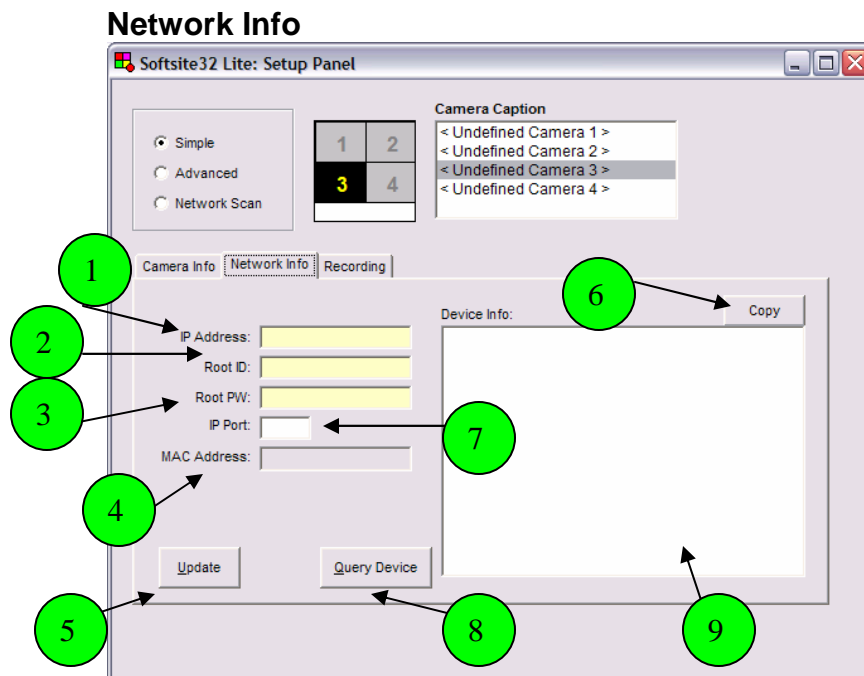
<http://Softsite32.com>

10. Query Device

- Checks devices against list of supported devices, and add information such as manufacturer, model, password Note: uses camera default information. If using other than default info, manually change the fields

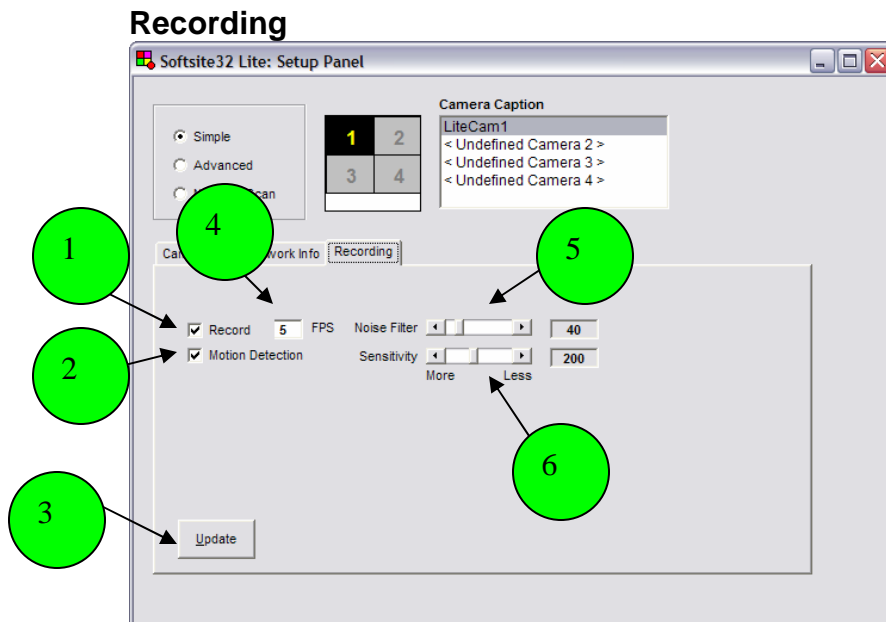
11. Image Preview

- Double click to receive an image preview of camera. Note: only works if IP address is already input



1. IP Address

- IP Address is typed here to communicate with the camera **Note:** Fields in yellow are required
- 2. Root ID**
 - Login name for the camera usually the administrator
- 3. Root Password**
 - Password for the login name above
- 4. Mac Address**
 - Unique number that all cameras have, field populates when query device is clicked
- 5. Update**
 - Updates all information on current tab or page work is being done on
- 6. Copy**
 - Copies information the in the Device Info window to the clipboard
- 7. IP Port**
 - If camera is set to any port other than 80 change it here
- 8. Query Device**
 - Pings device with IP address, retrieves all information regarding camera including Mac address, server type, default user name and password if one isn't specified
- 9. Device Info**
 - Displays info received from camera on a query

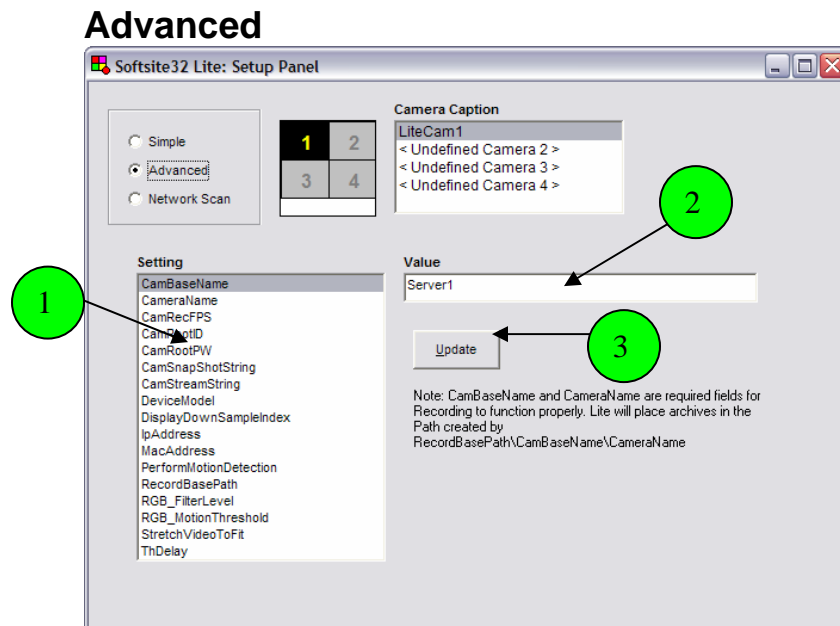


1. Record

JDS Digital Security Systems

<http://Softsite32.com>

- Check this box for interval recording
- 2. Motion Detection**
 - Check this box for motion recording
- 3. Update**
 - Updates all information on current tab or page work is being done on
- 4. FPS**
 - Type the requested frames per second you wish to record, Maximum of 5
- 5. Noise Filter**
 - Adjusts the noise filter to ignore noise in the picture for motion detection
- 6. Sensitivity**
 - Adjusts the sensitivity of the motion detection settings



1. Settings

JDS Digital Security Systems

<http://Softsite32.com>

- Individual settings are set here for each camera, most of these settings are discovered via the query device button. A definition list of these settings are in the appendix.

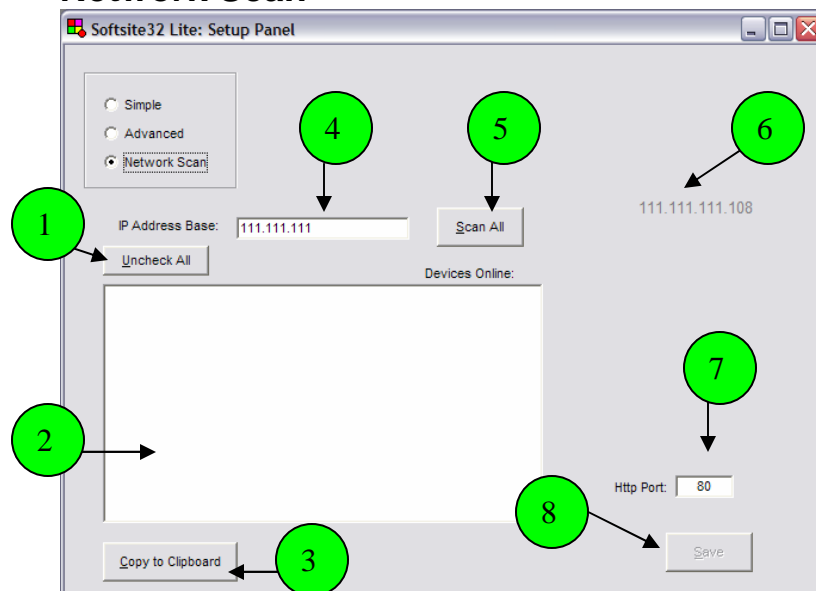
2. Value

- Where each of the individual values are changed for the individual settings

3. Update

- Updates all information on current tab or page work is being done on

Network Scan



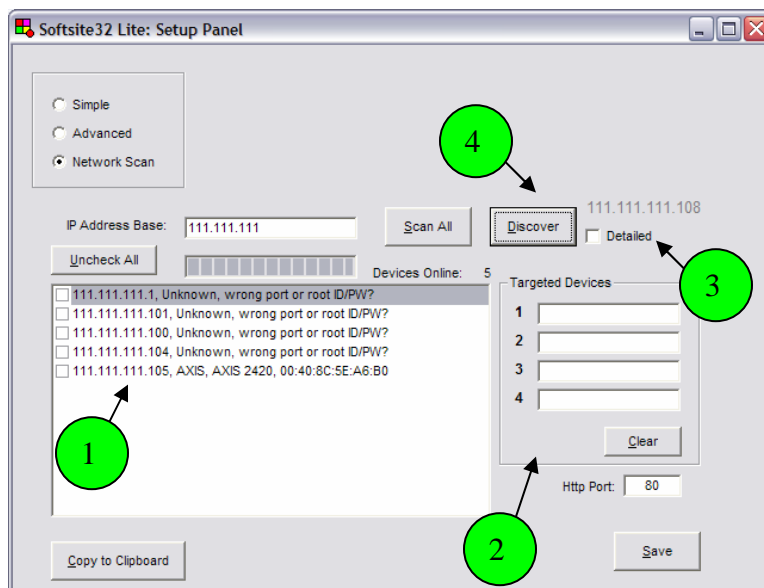
1. Uncheck All

- Uncheck all of the devices selected

JDS Digital Security Systems

<http://Softsite32.com>

2. **Devices Online**
 - All the devices found after a scan has been run
3. **Copy to Clipboard**
 - Copies all text in the devices online box
4. **Address Base**
 - The IP range scanned for devices
5. **Scan All**
 - When pushed the application scans the Address base for devices online, which can be cameras and servers but also computers.
6. **Current Address**
 - The address of your computer
7. **Http Port**
 - Default HTTP port of the scan
8. **Save**
 - Click to save the selected servers

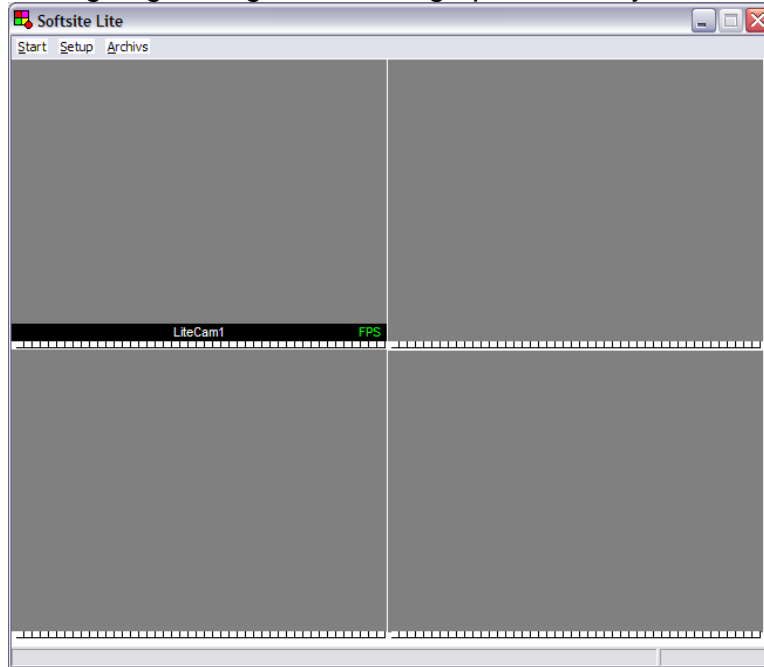


1. **Populated Device List**
 - List populates after using the discover button
2. **Targeted Devices**
 - Field populates when you select devices from the list
3. **Detailed button**
 - When selected a detailed list appears in the list
4. **Discover button**
 - When button is pressed the application finds which devices are supported by displaying server and model

General Use

Main Window

After going through and setting up cameras you will see this view



To start the cameras streaming click *Start*

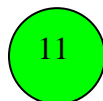
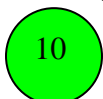
You will see the cameras you've added displaying



1. **Stop Button**
 - Button to stop streaming and access setup
2. **Title Bar**
 - Name of the camera, clicking twice will bring up more information regarding the camera
3. **Recording Button**
 - Indicates either motion recording or full time recording. Also can be pressed to bring up quickview
4. **Motion Activity Gauge**
 - Displays level of motion in the current picture, red triggers recording
5. **FPS**
 - Indicates speed of stream in frames per second

Archive Viewing Quickview

To Bring up quick view press the recording button
This will instantly show you the most recent captured video





1. Video Search Options

- You can use a directory tree or a date/time to search through archives (you may need to resize the window to show the bottom and the individual archives)

2. Directory Tree / Date and Time

- Depending on which tab you have chosen you will see either a directory tree or a calendar

3. Play

4. Pause

5. Play in Reverse

6. Play Speed

- Displays the current speed playback is occurring in

7. Slider Bar

- Allows quick movement through archive and also movement using the scroll wheel of the mouse

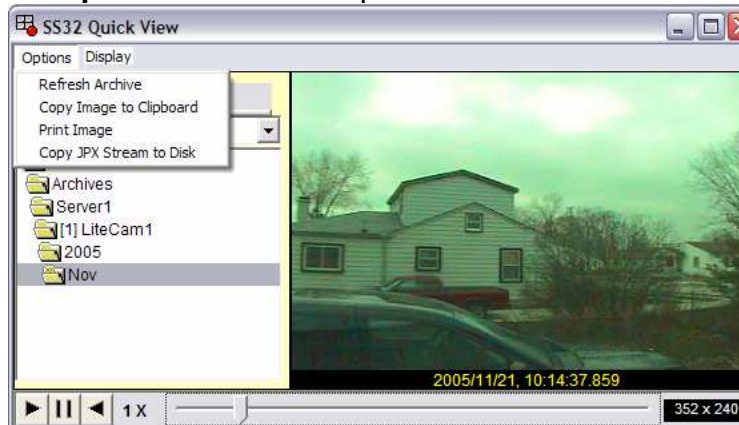
8. Video Window

- Where the images are displayed

9. Recorded Image size

- The size the image was recorded in

10. Options – Different options can be selected here

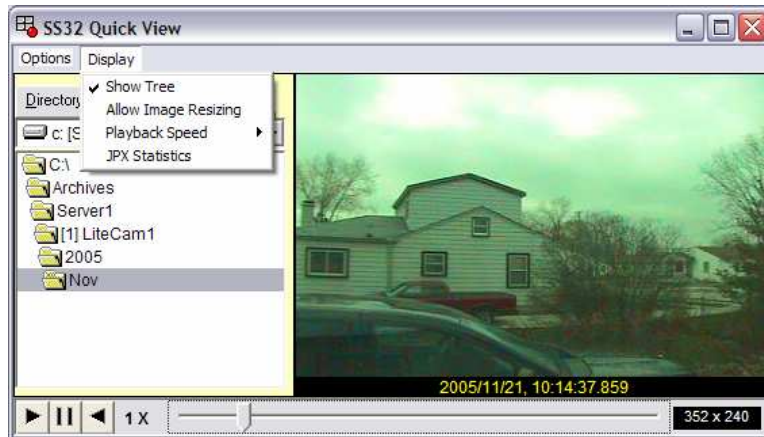


JDS Digital Security Systems

<http://Softsite32.com>

- *Refresh Archive* – adds video that has been recorded since the record button has been pushed
- *Copy Image to Clipboard* – Takes image from the video window and allows it to be pasted into other applications
- *Print Image* – Prints image to default printer
- *Copy Jpx Stream to Disk* - Copies the current file to another location on the hard drive

11. Display – Display options for the application can be selected here



- *Show Tree* – Displays the tree or the date and time depending on the method of retrieval selected
- *Allow Image Resizing* – Allows image to be stretched to a larger size for playback
- *Playback Speed* – Allows playback speed to be changed
- *JPX Statistics* – Displays frame count and size of current archive