



JDS Digital Security Systems
P.O. Box 374
New Baltimore, MI 48047
(586) 749-6342
(734) 629-1555
www.jdssecuritysoftware.com

Softsite32 JPX Monitor
JPXMonitor.exe
04/18/2007

JPXMonitor.exe is used to monitor JPX streams of video from a Group or Groups of cameras. Its purpose is to alert the system that video is NO longer being recorded. This alert can be via email, audio, or visual alert. See JPXMonitor.ini settings below to set alert features.

***** Note: This will only work with Groups running under Enterprise. Groups are created with the group editor located in Softsite32 Enterprise user Setup-hardware*****

This utility is best suited to run on a separate PC. This will ensure that notification is made in seconds upon any failure of the cameras, network or NVR system. This includes user errors caused by not restarting software, etc.

When this application is used, the customer can be assured that they will never be surprised by 'no video' for any required event, provided the application is properly monitored by personnel.

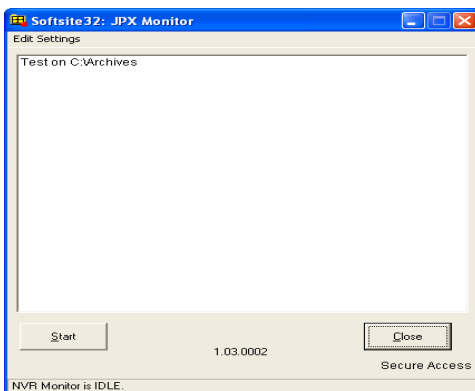
JPXMonitor.exe is installed by Softsite32 Surveillance products automatically. The installed files related to this application are;

JPXMonitor.exe	Application
JPXMonitor.ini	Settings for the Application

Command line options for JPX Monitor (added to the end of the command line of the shortcut for the application)

/AUTO	Auto start the application on launch. Also available in INI
Jpxmonitor.ini	Call out separate ini file name for launching multiple version when running more than 32 groups. Do not use a slash

- 1. Launch JPXMonitor from the Softsite32 Enterprise folder**
- click Start



This app above shows one NVR groups call Test and it is recording to C:\Archives.

Click Start to begin monitoring.



Digital Security Systems

JDS Digital Security Systems
P.O. Box 374
New Baltimore, MI 48047
(586) 749-6342
(734) 629-1555
www.jdssecuritysoftware.com

Monitoring Panel

A monitoring panel appears for each group that is being monitored. Each camera is shown as a line item in the grid.

- 1. Current Date and Time
• Displays Current Date and Time
2. Record Path
• Displays Record path of camera selected
3. Num
• Cam number in group
4. Server/Cam
• List of monitoring cameras including their servers
5. (07) Mon 14 00 00.jpx
• Name of the current archive being monitored. Column list's current size of the file.
6. Last Size
• Size of file from the last poll, should be less than the column to the left.
7. Last 20 cycles column
N = Normal Operation. Files are being written
Z = Zero Byte change from last poll
X = Archive expected, but not found
7. Stop
• Stops the jpxmonitor from monitoring
9. Color codes
White = Archive within alert specification
Yellow = Archive size not changed on multiple polls: Threshold reached
Red = Expected archive not found on multiple polls; Threshold reached



Digital Security Systems

JDS Digital Security Systems
P.O. Box 374
New Baltimore, MI 48047
(586) 749-6342
(734) 629-1555
www.jdssecuritysoftware.com

JPXMonitor.ini settings

Table with 2 columns: Setting Name and Description. Includes settings like AutoStart, Camera_Database, EmailNotificationEnabled, etc.